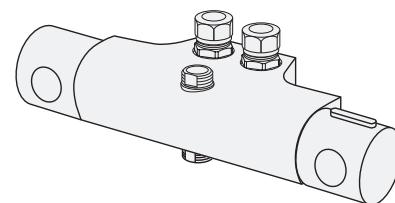
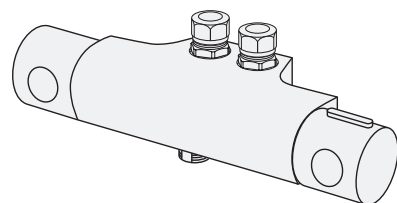
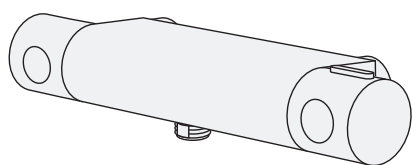
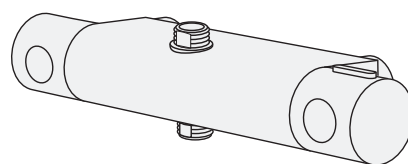
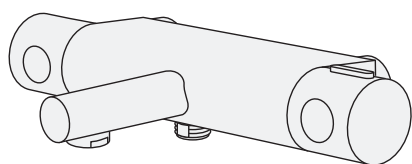


- SWE MONTERINGSANVISNING SKANDIC TERMOSTAT  
 GBR MOUNTING INSTRUCTIONS SKANDIC THERMOSTAT  
 DEN MONTERINGSANVISNING SKANDIC TERMOSTAT  
 NOR MONTERINGSANVISNING SKANDIC TERMOSTAT  
 FIN SKANDIC TERMOSTAATTIHANOJEN ASENNUSOHJE  
 EST SKANDIC TERMOSTAATSEGISTI PAIGALDUSJUHEND  
 LAT UZSTĀDĪŠANAS INSTRUKCIJA SKANDIC TERMOJAUCĒJKRĀNS  
 LTU TERMOSTATINIO MAIŠYTUVO SKANDIC MONTAVIMO INSTRUKCIJA  
 UKR ІНСТРУКЦІЯ З МОНТАЖУ ТЕРМОСТАТИЧНОГО ЗМІШУВАЧА SKANDIC  
 CZE MONTÁŽNÍ NÁVOD SKANDIC TERMOSTATICKÉ BATERIE  
 SVK MONTÁŽNY NÁVOD SKANDIC TERMOSTATICKÉ BATÉRIE  
 ROU INSTRUCȚIUNI DE MONTARE SKANDIC TERMOSTAT





Garanti. Takuu. Guarantee. Garantija.  
Garantija. Гарантія. Záruka. Garanție. Гарантія.

3/26



Tekniska data / Funktion  
Technical data / Handling

4-6/26



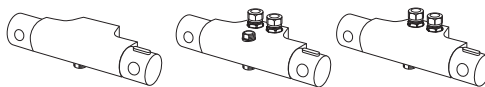
Skandic 150 c-c. 160 c-c



7/26



Skandic 40 c-c



8/26



Demontera - fryspunkt  
Dismount - freezing point  
Fjerne fastinstillingen  
Demontere-frysepunkt  
Irota jos jäätymisvaara  
демонтаж- при замерзании

Eemalda - külmumisvõimalusel  
Aizsāšanas sliekšnis  
Išmontuoti esant užšalimo tikimybei  
Демонтувати при температурі нижче 0°C  
Odmontujte při mrazu  
Odmontujte при мразу

7/26



9-10/26



Skötsel  
Maintenance  
Beskyttelse  
Vedlikehold  
Hoito-ohje  
Уход

Hooldus  
Kopšanas informācija  
Montavimas  
Догляд  
Pēce o baterij  
Starostlivost' o batériu

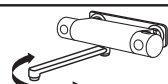
10/26



Rengöring  
Clean  
Rengöring  
Rengöring  
Puhdistus  
очистка

Puhastamine  
Tirišana  
Švarus  
Очищення  
Čistý

11-12/26



13/26



Justera komforttemperatur  
Adjustment energy saving  
Justere idealtemperatur  
Justere komforttemperatur  
Esiasetun lämpötila säätö  
Настройка функции энергосбережения

Veet temperatuuri reguleerimine  
Energiijas taupšanas regulēšana  
Enerģijas taupumo reguliātojas  
Налаштування збереження енергії  
Nastavenie teploty vody  
Nastavenie teploty vody

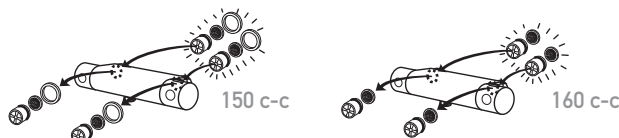
14/26



Begränsa temperaturen  
Limit temperature  
Begränsa temperaturen  
Begränsa temperaturen  
Kuuman veden rajoittaminen  
Настройка ограничителя температуры

Temperatuuri piiramine  
Temperatūras ierobežošana  
Ribota temperatūra  
Лімітування температури  
Hraniční teplota  
Hraničná teplota

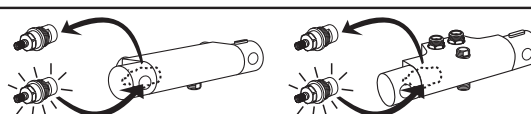
15/26



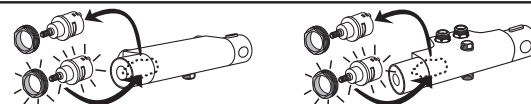
16/26



17-18/26



19/26



20/26



Rengöring  
Clean  
Rengöring  
Rengöring  
Puhdistus  
очистка

Puhastamine  
Tirišana  
Švarus  
Очищення  
Čistý

21-23/26



Instruktion för hetvatten genomspolning  
Instructions how to disinfect  
Instruktion for varmt vand gennemspulning  
Instruksjon desinfeksjon/gjennomspylning med varmtvann  
Ohjeet kuinka suorittaa kuumavesihuuhtelu

24-25/26



Reservdelar  
Spare parts  
Reservdeler  
Reservelele  
Varaosat

Varuosad  
Atsarginės dalys  
Rezerves daļas  
Запасные части

26/26

## SE GARANTI

Produkten har garanti enligt respektive lands gällande branschvillkor.

### Direktiv vid reklamation

Våra produkter är tillverkade enligt väldigt stränga kvalitetskrav. Om en produkt trots det är felaktig, ber vi er i första hand att kontakta din återförsäljare. Ärendet underlättas genom att uppvisa kvitto och uppge produktnummer och inköpsdatum.

## DK GARANTI

Produktet har garanti i forhold til gældende dansk lovgivning.

### Vejledning ved reklamation

Vores produkter er fremstillet i overensstemmelse med markedets strengeste krav til kvalitet. Skulle produktet mod forventning være behæftet med fejl henviser vi til den forhandler, hvor produktet er købt. Kvittering skal kunne fremvises, hvis forhandleren forlanger det, ligesom oplysninger om produktnummer og købsdato skal kunne dokumenteres.

## NO GARANTI

Produktene har garanti i henhold til respektive lands gjeldende bransjevilkår.

### Instrukser ved reklamasjon

Våre produkter er produsert i henhold til veldig strenge kvalitetskrav. Om et produkt til tross for dette skulle være feilaktig, ber vi deg vennligst ta kontakt med forhandleren. Vi ber deg medbringe kvittering og oppgi innkjøpsdato samt produktnummer.

## FI TAKUU

Noudatamme alamme yleisiä toimitusehtoja.

### Reklamaatio

Tuotteemme ovat valmistettu Villeroy & Boch ja Gustavsbergin laatuvaatimuksien mukaisesti. Mikäli tuote kuitenkin on virheellinen pyydämme teitä kääntymään ensisijaisesti tuotteen myyjän puoleen. Käsittelemme helpottamiseksi säilyttäkää tosite tuotteen ostosta.

## GB GUARANTEE

The product has a guarantee accordingly to industry rules in every country.

### Instructions for complaints

Our products are made according to very strict quality demands. If the product is faulty in spite of that we ask you kindly to take it to your retailer. We also ask you to bring the receipt and be prepared to inform about the product number and purchasing date.

## EE GARANTII

Antud tootel on garantii vastavalt tehase poolt kehtestatud tingimustele.

### Juhised reklamatsioonide käsitlemiseks

Meie tooted on valmistatud silmas pidades väga täpseid kvaliteedistandardeid. Juhul kui olete saanud praaktoote, palume Teil toimetada see kas meie edasimüüja juurde või võtta ühendust esindusega. Samuti palume alles hoida ostutsekk ning vajadusel anda informatsiooni tootenumbri ja ostu sooritamise aja kohta.

## LV GARANTIJA

Izstrādājumam ir garantija saskaņā ar ražotāja standartiem.

### Instrukcija kvalitātes problēmu gadījumā

Mūsu produkcija tiek ražota pēc ļoti striktiem kvalitātes kritērijiem. Taču – gadījumā, ja produktam tiek konstatēta kvalitātes problēma – lūdzu, sazinieties ar pārdevēju. Lūdzu, esiet gatavi arī uzrādīt pirkuma čeku ar pirkuma datumu.

## LT GARANTIJA

Gaminiams garantija suteikiama atsižvelgiant į konkrečios šalies kokybės reikalavimus.

### Reklamacijos

Mūsų produkcija pagaminta vadovaujantis griežtais kokybės reikalavimais. Jei gaminys nekokybiškas – prašome jį gražinti pardavėjui, pateikiant pirkimo čekį, gaminio numerį bei nurodant pirkimo datą.

## ГАРАНТІЯ

Ця продукція підтримується гарантією у відповідності з правилами та законами, що діють у країні збуту.

### Рекламації

Наша продукція відповідає сучасним стандартам та вимогам щодо якості. У випадку виникнення несправності, Ви можете звернутися в торгову організацію, де був придбаний цей виріб. Для оформлення рекламації необхідно додати супровідні документи щодо виробу та чек, що підтверджує найменування та дату покупки

## RU ГАРАНТИЯ

Гарантийные условия устанавливаются в соответствии с законами и правилами, которые действуют в стране сбыта.

### Рассмотрение рекламаций

Наша продукция соответствует современным стандартам и требованиям к качеству. В случае возникновения неисправности Вы можете обратиться в торговую организацию, где было приобретено данное изделие. При заявлении рекламации необходимо предъявить сопроводительные документы к данной продукции и чек, подтверждающий дату покупки.

## GARANTII

Antud tootele kehtivad garantiitingimused tulenevad kohalikest õigusaktidest.

### Juhised reklamatsioonide käsitlemiseks

Meie tooted on valmistatud silmas pidades väga täpseid kvaliteedistandardeid. Juhul kui olete saanud praaktoote, palume Teil toimetada see kas meie edasimüüja juurde või võtta ühendust esindusega. Samuti palume alles hoida ostutsekk ning vajadusel anda informatsiooni tootenumbri ja ostu sooritamise aja kohta.

## GARANTIJA

Produktam ir garantija atbilstoši nozares noteikumiem konkrētājā valstī.

### nstrukcijas sūdzību pieteikšanai

Mūsu produkti ir izgatavoti saskaņā ar ļoti stingriem kvalitātes prasībām. Tomēr, ja produkts ir bojāts, mēs lūdzam griezties produkta iegādes vietā. Mēs lūdzam arī sagatavot uzrādīšanai pirkuma čeku un informāciju par pirkuma datumu.

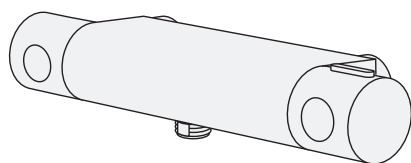
## GARANTIJA

Gaminiams garantija suteikiama atsižvelgiant į konkrečios šalies kokybes reikalavimus.

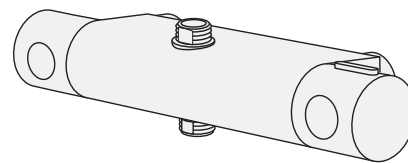
### Pretenzijos

Mūsų produkcija pagaminta vadovaujantis griežtais kokybes reikalavimais. Jei gaminys nekokybiškas – prašome jį gražinti pardavėjui, pateikiant pirkimo čekį, bei nurodyti pirkimo datą

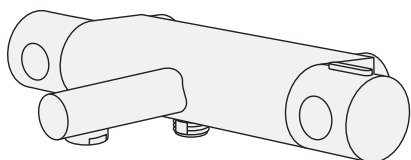
# TEKNISK DATA / TECHNICAL DATA



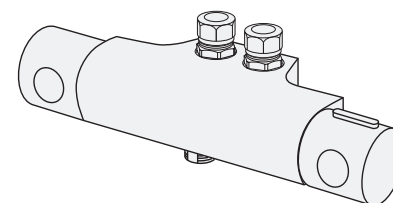
Artnr/Art no	RSK no
GB41203604	8350185
GB4120360453	8350186
GB41213604	8350230



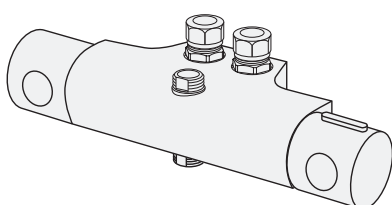
Artnr/Art no	RSK no
GB41203602	8350183
GB4120360253	8350184
GB41213602	8350228
GB4121360253	8350229



Artnr/Art no	RSK no
GB41203633	8245042
GB4120363353	8245043
GB41213633	8245047
GB4121363353	8245048



Artnr/Art no	RSK no
GB41203804	8350192



Artnr/Art no	RSK no
GB41203802	8350191

## TEKNISK DATA / TECHNICAL DATA



EUF129-22005583-TH



C900798

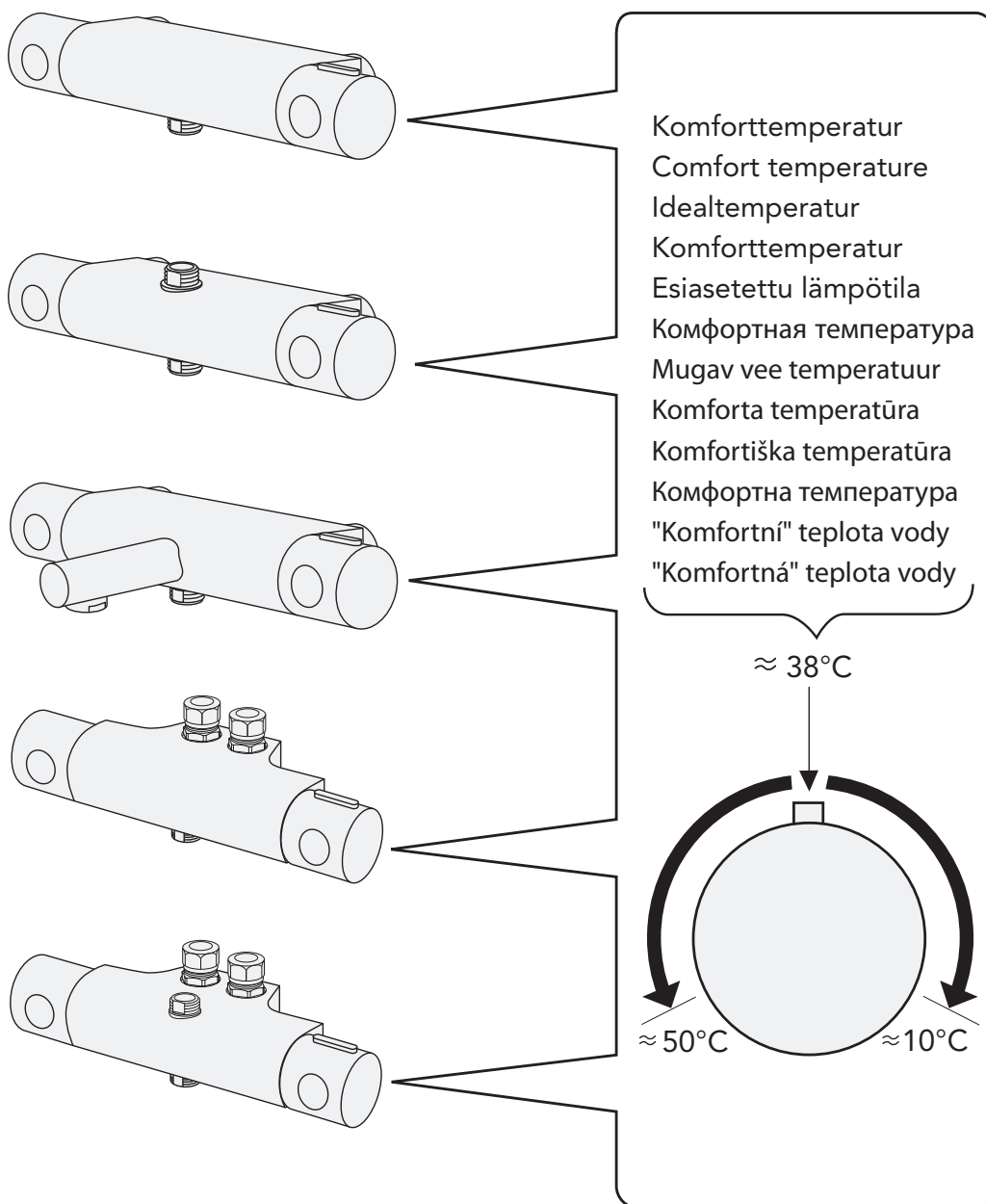


SV: Dessa blandare uppfyller kraven gällande återströmning enligt SS-EN 1717 och SäVa § 4.3.2 utan behov av kompletterande produkter eller åtgärder.

Standard / Standard	EN1111
Drifttryck / Working pressure	50-1000 kPA
Provningstryck max / Testpressure max	1600 kPA
Max varmvattentemperatur / Max. hot water temperature	80° C
Rekommenderad varmvattentemp. / Recommended hot water temp.	60° C
Kallvattentemperatur / Cold water	10° C
Anslutning / Connection	150c-c G3/4. 160c-c M26 X1.5 40c-c G1/2
Återströmningsskydd / Backflow preventer Dusch / Shower	EN1717 EB
Desinfektion / Thermal disinfection	70°C. 4 minutes



# SKANDIC 150 c-c. 160 c-c. 40 c-c.





## SKANDIC 150 c-c. 160 c-c

**1**

On  
Auki  
вкл.  
Ieslēgts  
Ijungta  
Відчинено  
Zarputo  
Zarputé

**2**

Max  
Maks.  
Maksimi  
макс.  
Maksimum

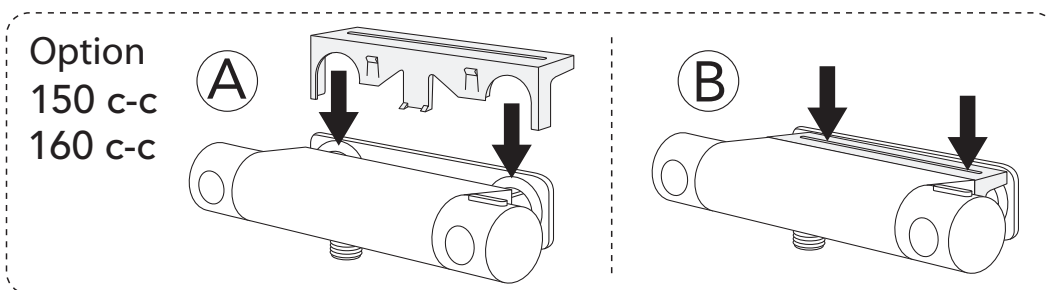
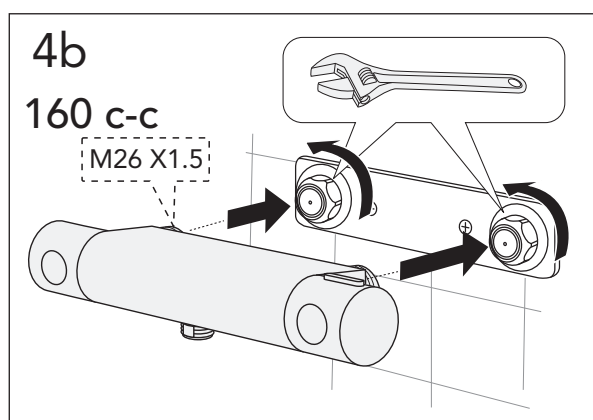
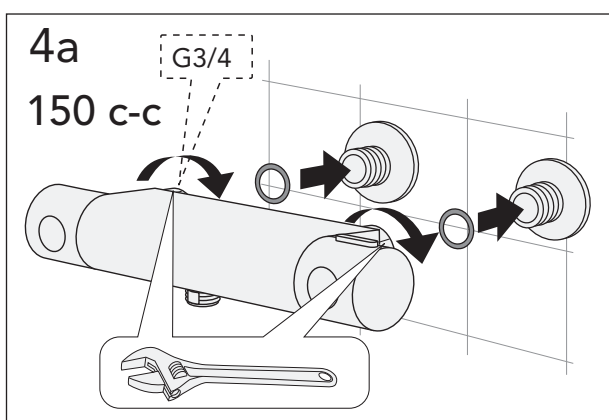
Maksimālā  
Maksimumas  
максимум  
Макс.

1000 kPa (10 bar)

Max. 80°C  
Maks. 80°C  
Maksimi. 80°C  
макс. 80°C  
Maksimum. 80°C  
Maksimālā. 80°C  
Maksimumas. 80°C  
максимум. 80°C  
Макс. 80°C

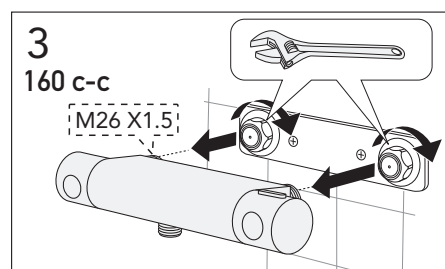
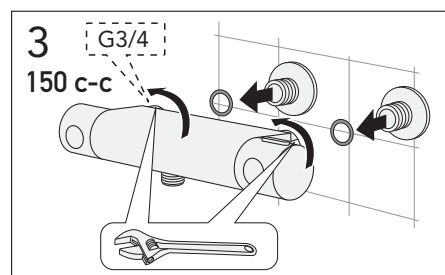
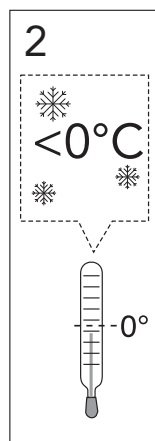
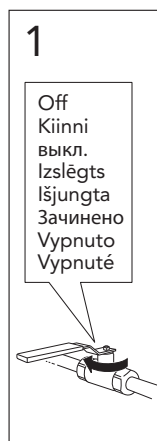
**3**

Off  
Kiinni  
выкл.  
Izslēgts  
Ijungta  
Зачинено  
Vupnuto  
Vupnuté



## SKANDIC 150 c-c. 160 c-c

Demontera - fryspunkt  
Dismount - freezing point  
Fjerne fastinstillingen  
Demontere-frysepunkt  
Irrota jos jäätymisvaara  
демонтаж- при замерзании  
Eemalda - külumismisvõimalusel  
Aizsalšanas sliekšnis  
Išmontuoti esant užšalimo tikimybei  
Демонтувати при температурі нижче 0°C  
Odmontujte při mrazu  
Odmontujte pri mrazu





# SKANDIC 40 c-c

**1**

On  
Auki  
вкл.  
Ieslēgts  
Ijungta  
Відчинено  
Zarputo  
Zarputé

**2**

Max. 80°C  
Maks. 80°C  
Maksimi. 80°C  
макс. 80°C  
Maksimum. 80°C  
Maksimāla. 80°C  
Maksimumas. 80°C  
максимум. 80°C  
Макс. 80°C

Max  
Maks.  
Maksimi  
макс.  
Maksimum

Maksimāla  
Maksimumas  
максимум  
Макс.

40 c-c

1000 kPa (10 bar)

10°C

**3**

Off  
Kiinni  
выкл.  
Izslēgts  
Ijungta  
Зачинено  
Vurputo  
Vurputé

**4**

A B C

A B C D

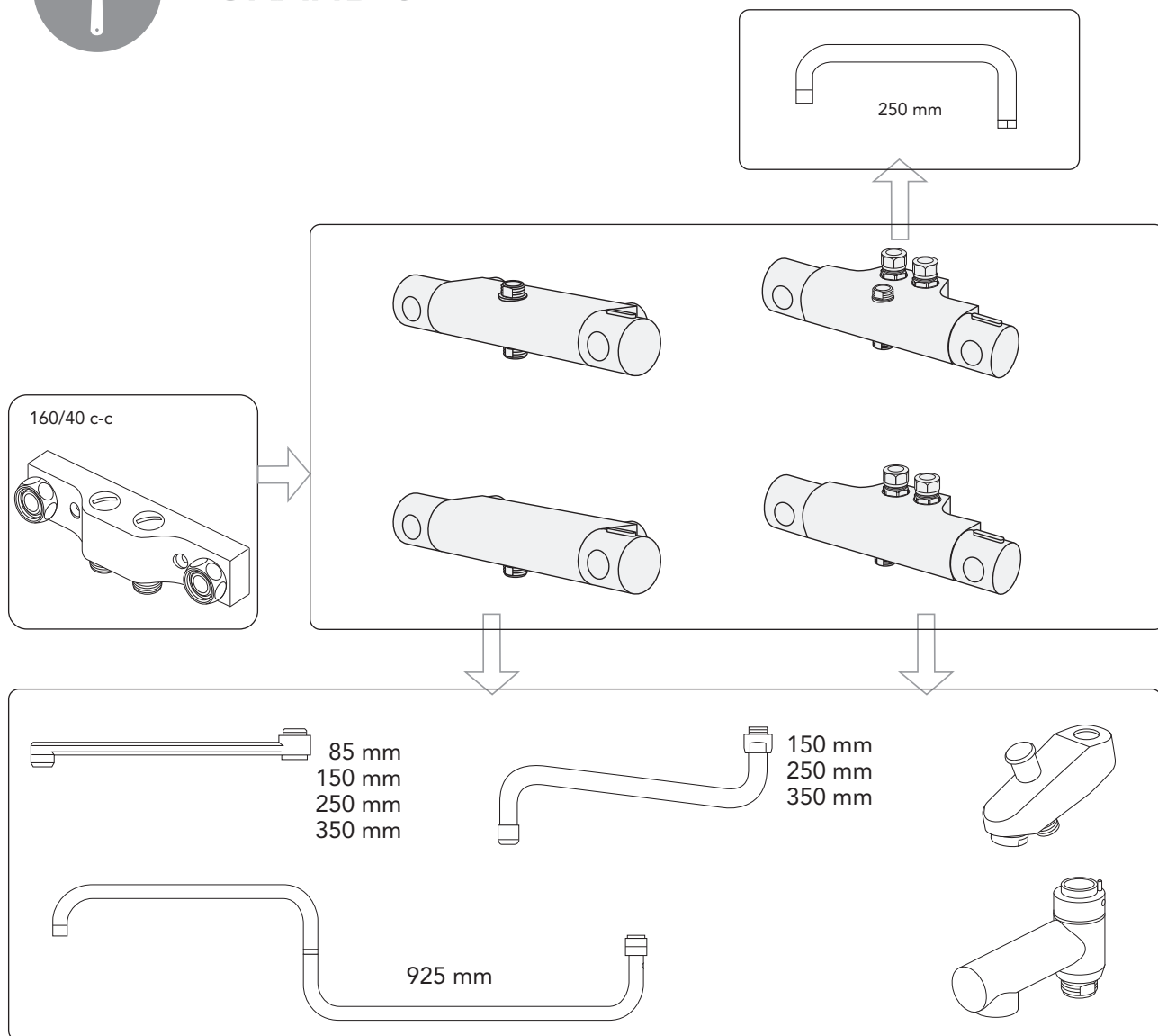
**5**

A B

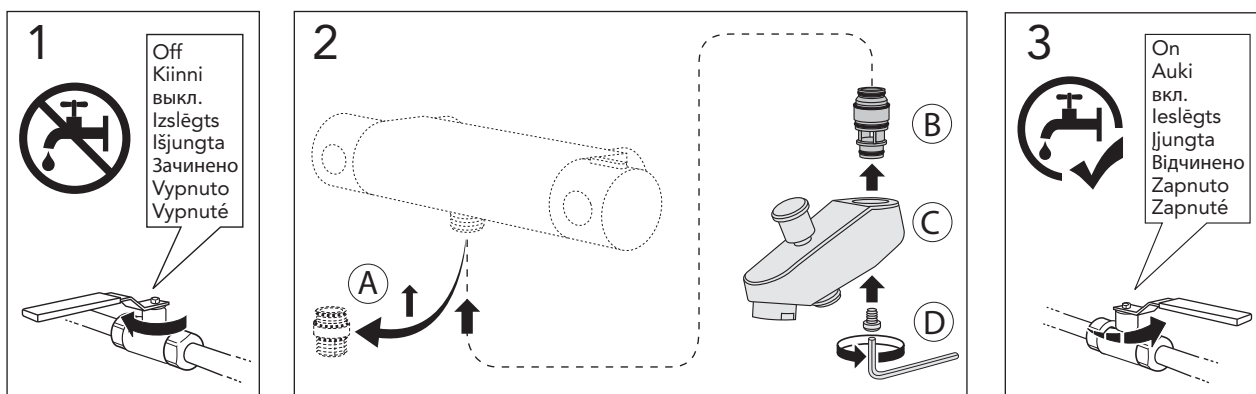
**6**



# SKANDIC

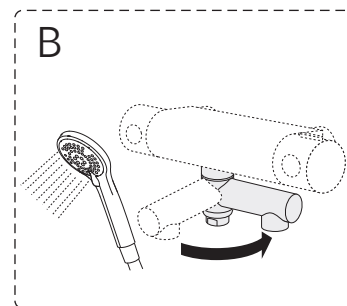
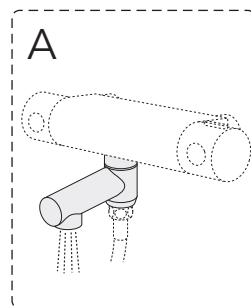
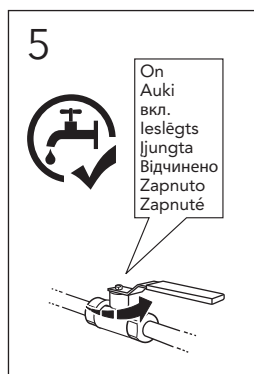
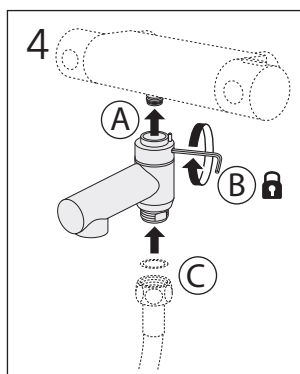
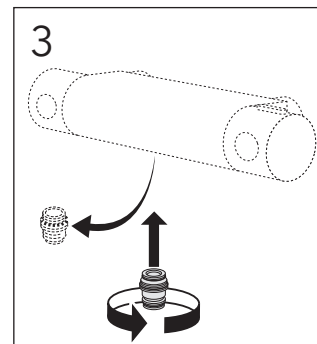
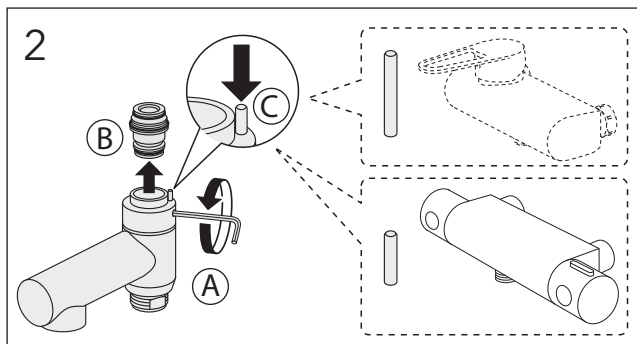
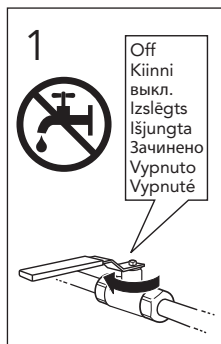


# SKANDIC



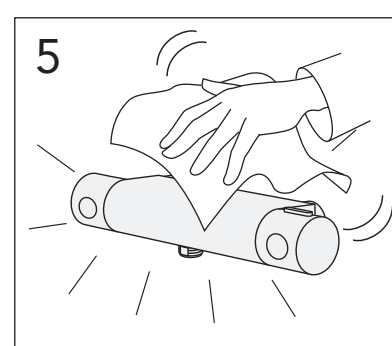
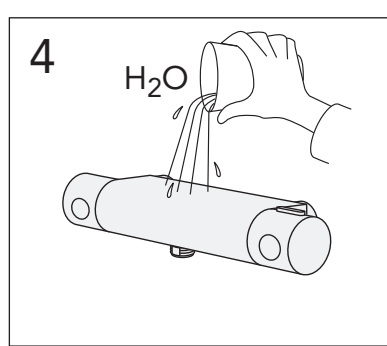
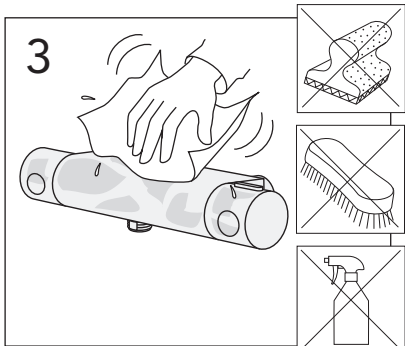
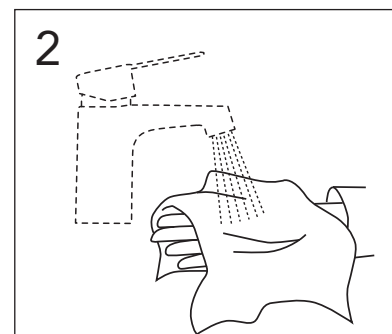
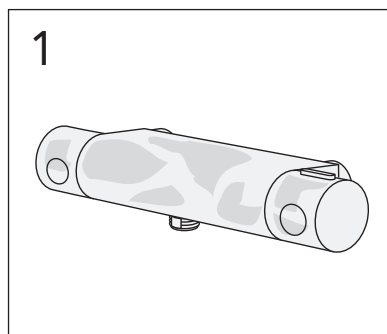


## SKANDIC



## SKANDIC

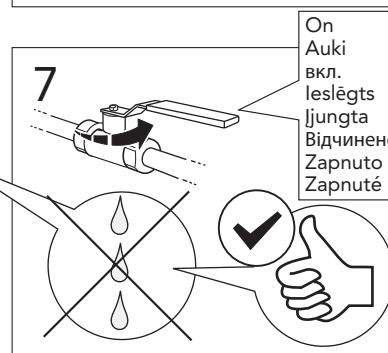
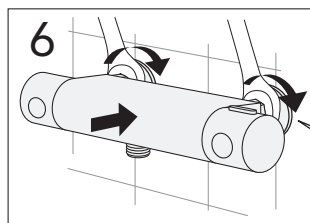
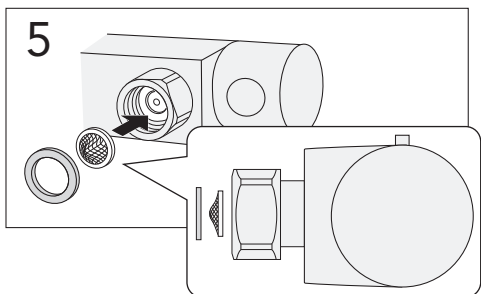
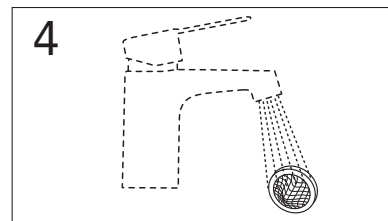
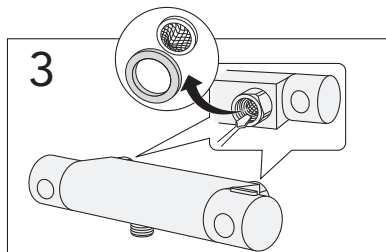
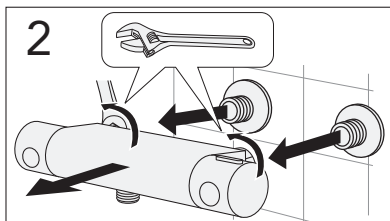
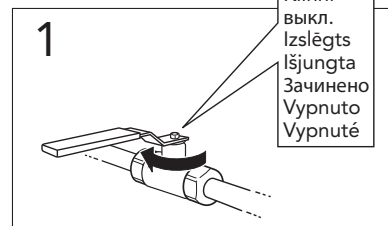
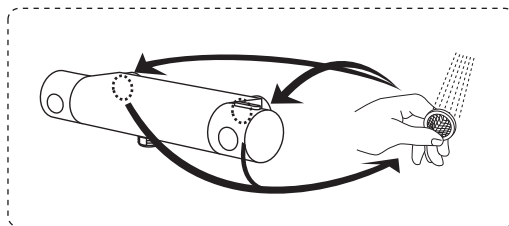
Skötsel  
Maintenance  
Beskyttelse  
Vedlikehold  
Hoito-ohje  
Уход  
Hooldus  
Koršanas informācija  
Montavimas  
Догляд  
Péče o baterii  
Starostlivosť o batériu





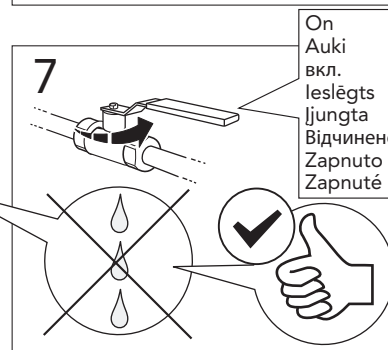
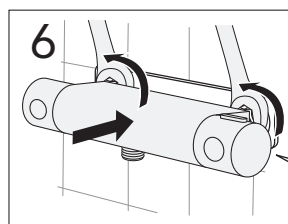
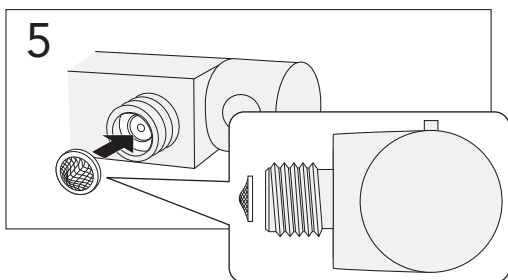
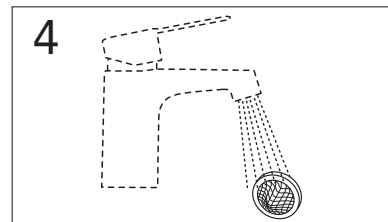
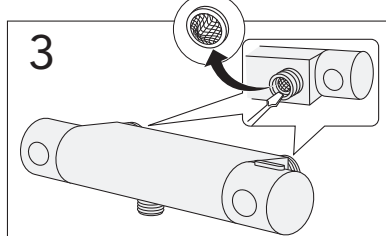
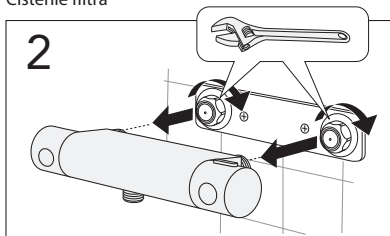
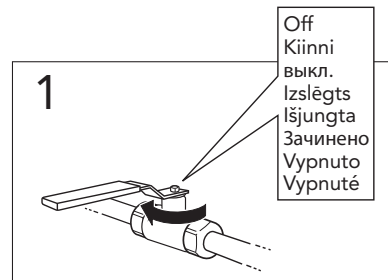
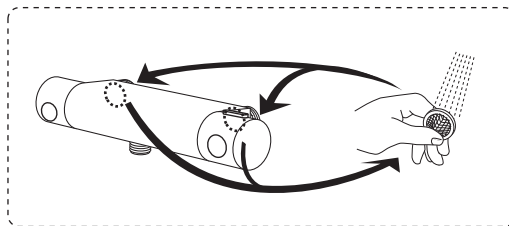
## SKANDIC 150 c-c

Rengõring filter  
 Cleaning filter  
 Rengõringsfilter  
 Rengjøringsfilter  
 Sihtien puhdistus  
 Очистка фильтра  
 Sõela puhastamine  
 Attiršanas filtrs  
 Valymo filtras  
 Очистка фільтру  
 Čistění filtru  
 Čistenie filtra



## SKANDIC 160 c-c

Rengõring filter  
 Cleaning filter  
 Rengõringsfilter  
 Rengjøringsfilter  
 Sihtien puhdistus  
 Очистка фильтра  
 Sõela puhastamine  
 Attiršanas filtrs  
 Valymo filtras  
 Очистка фільтру  
 Čistění filtru  
 Čistenie filtra

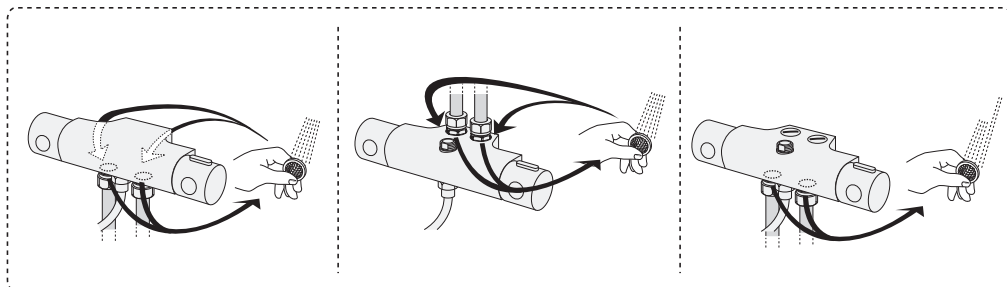




# SKANDIC 40 c-c

## 40 c-c

Rengöring filter  
 Cleaning filter  
 Rengöringsfilter  
 Rengjøringsfilter  
 Sihtien puhdistus  
 Очистка фильтра  
 Sõela puhastamine  
 Attiršanas filtrs  
 Valymo filtras  
 Очистка фільтру  
 Čistení filtru  
 Čistenie filtra



**1**

Off  
 Kiinni  
 выкл.  
 Izslēgts  
 Işjüngta  
 Зачинено  
 Угнупото  
 Угнупутé

**2**

**3**

**4**

**5**

**6**

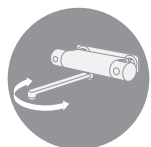
**7**

**8**

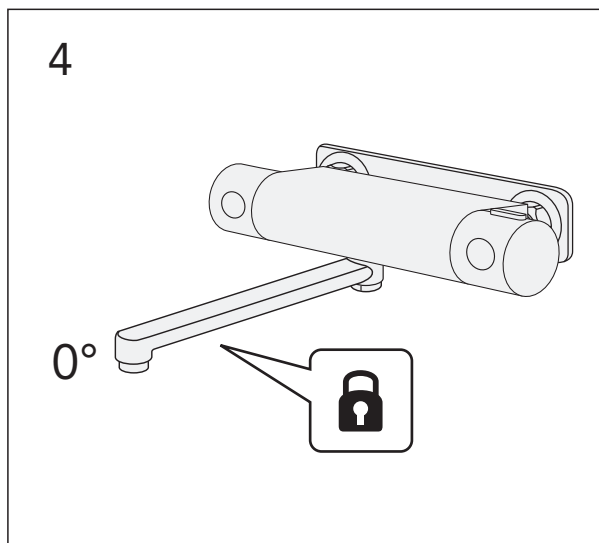
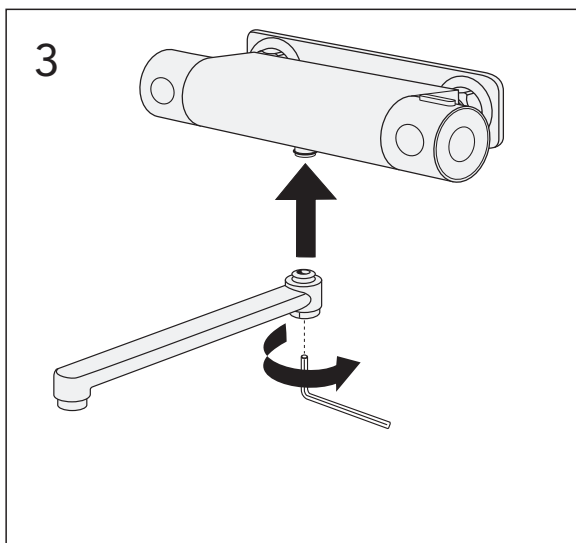
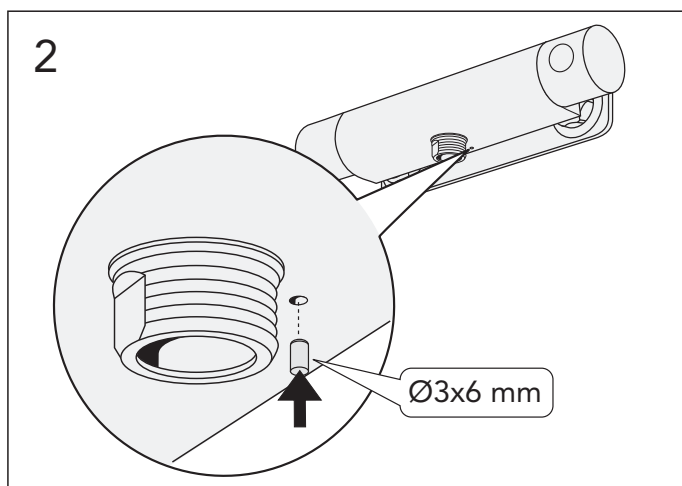
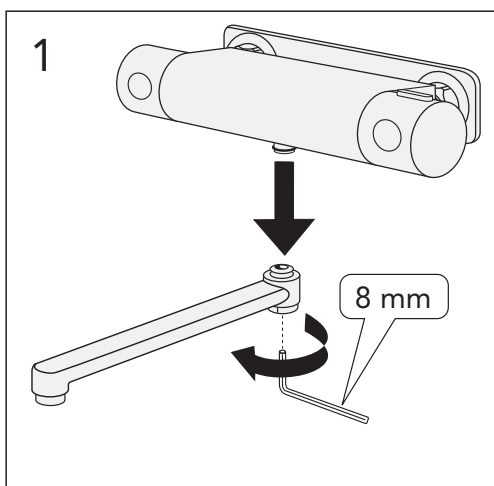
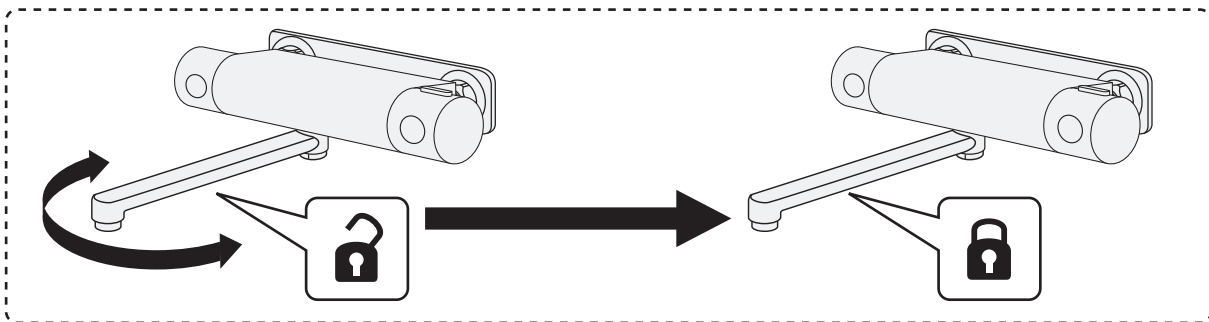
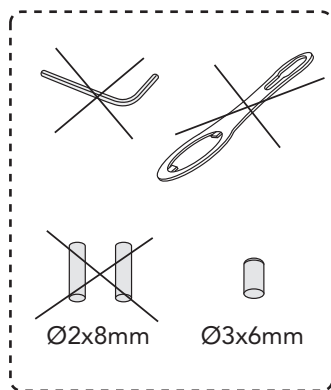
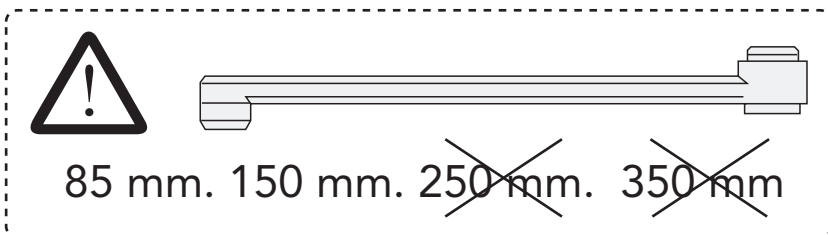
**9**

**10**

On  
 Auki  
 вкл.  
 Ieslēgts  
 Işjüngta  
 Відчинено  
 Zapnuto  
 Zapnuté



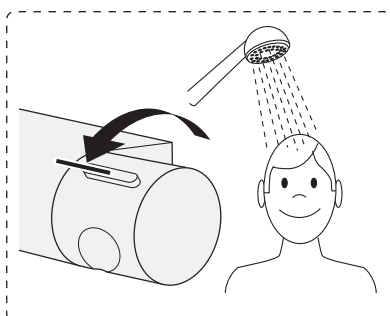
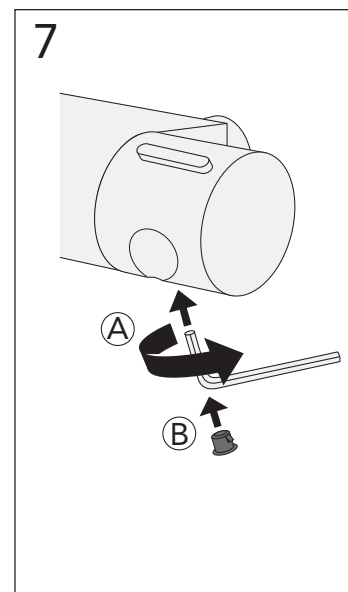
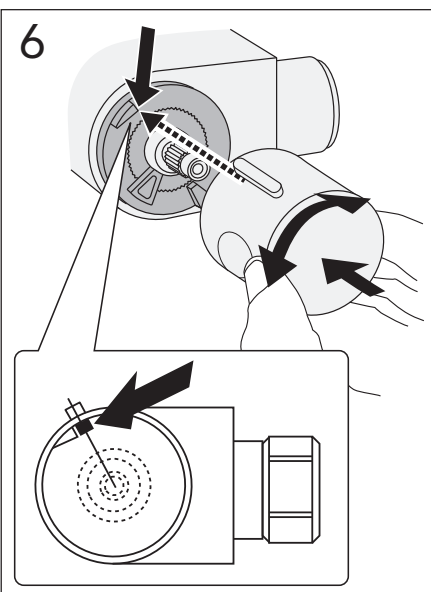
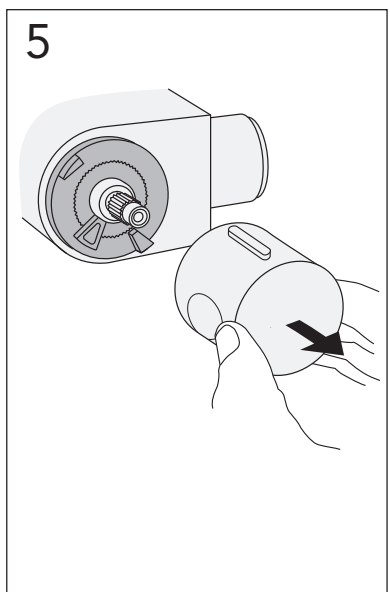
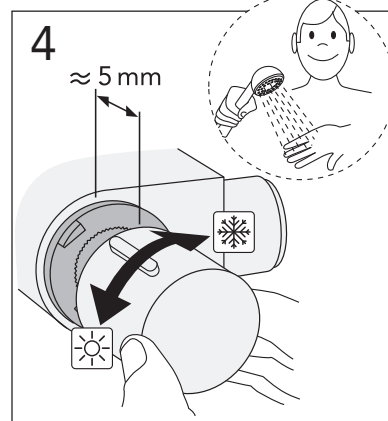
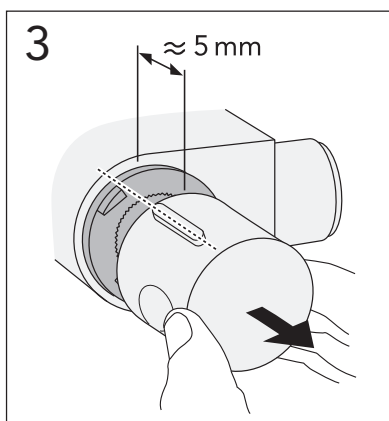
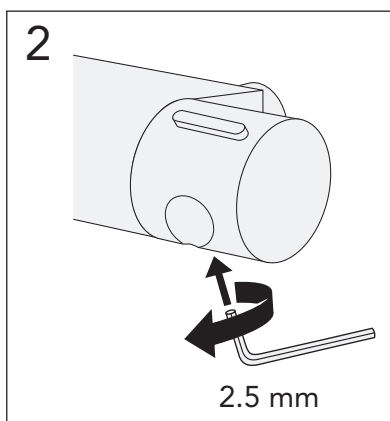
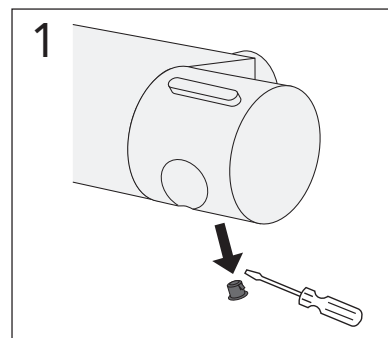
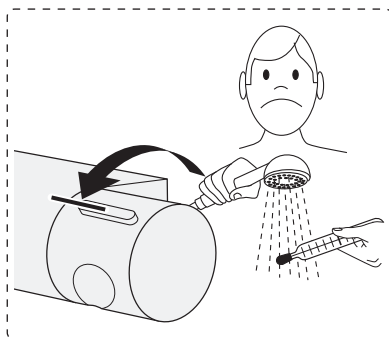
# SKANDIC





# SKANDIC

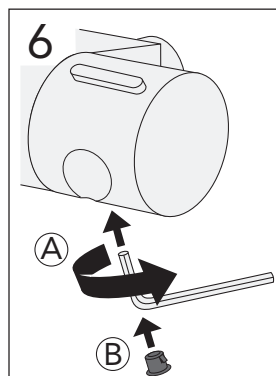
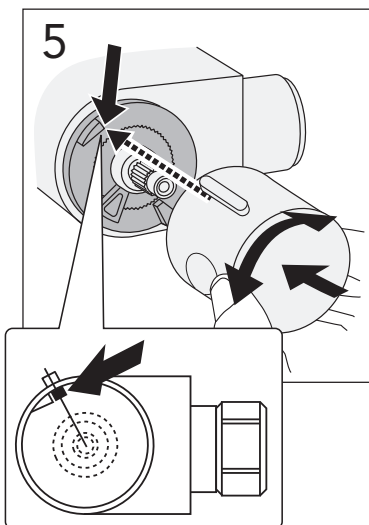
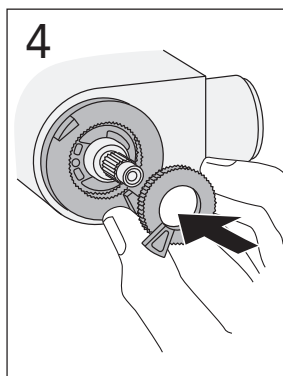
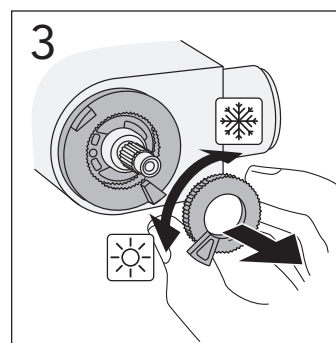
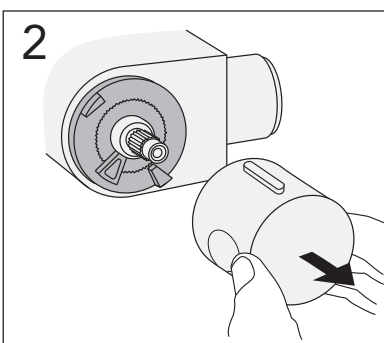
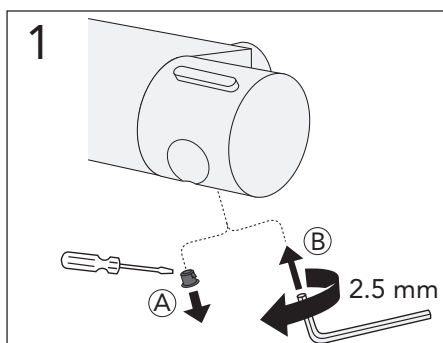
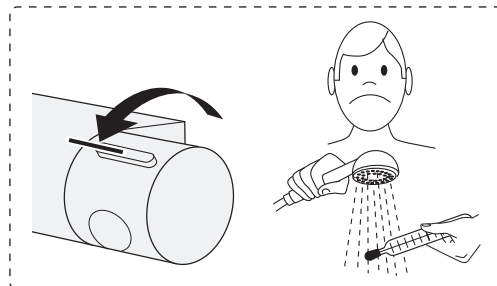
Justera temperaturen  
Temp adjustment  
Justere temperaturen  
Justere temperaturen  
Säädä lämpötilarajoin  
Настройка ограничителя температуры  
Temperatuuri reguleerimine  
Temperatūras regulēšana  
Temperatūros reguliuotojas  
Налаштування температури  
Nastavení teploty  
Nastavenie teploty





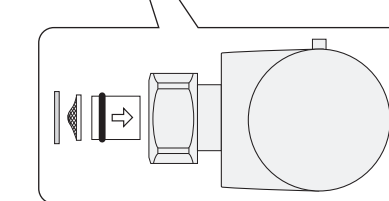
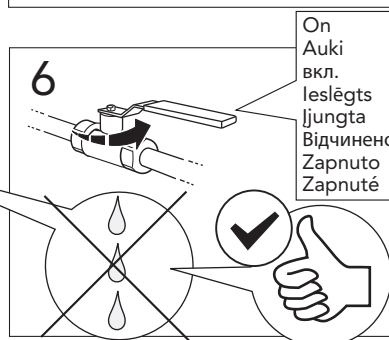
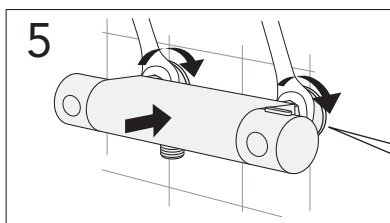
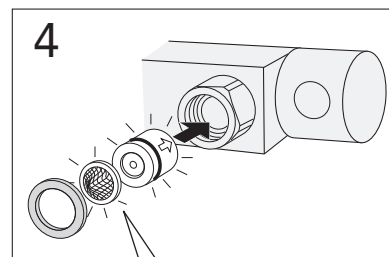
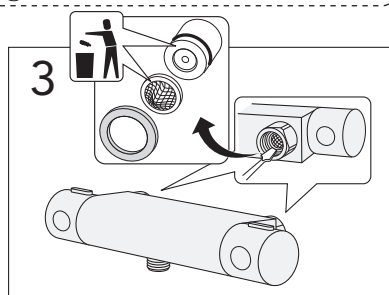
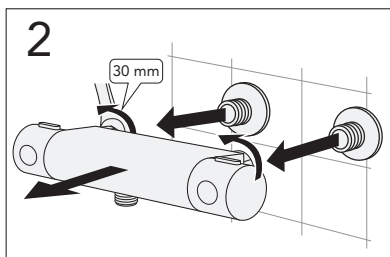
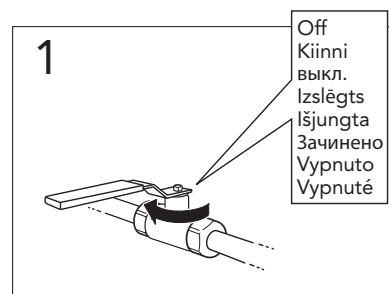
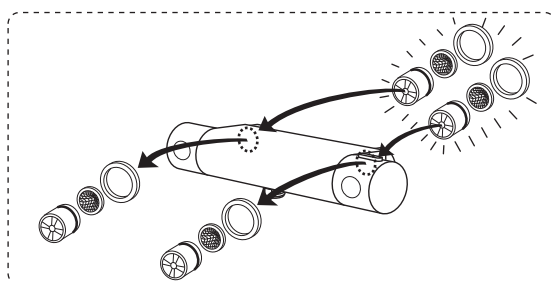
# SKANDIC

Begränsa temperaturen (Maxvärme)  
 Limit temperature (Max hot)  
 Begrænse temperaturen (Max varme)  
 Begrense temperaturen (Maks varme)  
 Kuuman veden rajoittaminen (Kuuman veden rajoittaminen)  
 Настройка ограничителя температуры (Ограничитель горячей воды)  
 Temperatuuri piiramine (Reguleerimine maksimum temperatuurile)  
 Temperatūras ierobežošana (Maksimāli karsts)  
 Ribota temperatūra (Maksimaliai karšta)  
 Лімітування температури (Максимально гаряча)  
 Hraníční teplota (Max horká)  
 Hraníčná teplota (Max horúca)

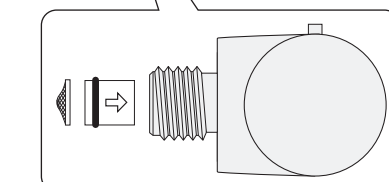
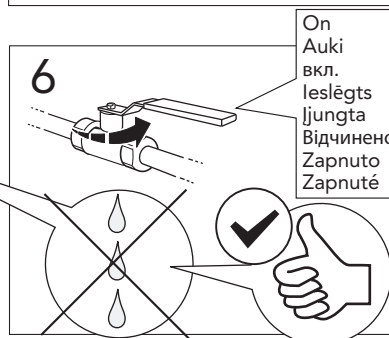
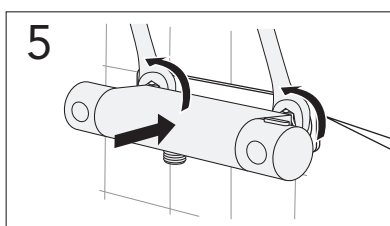
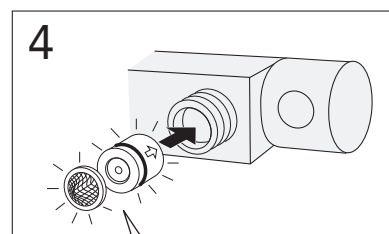
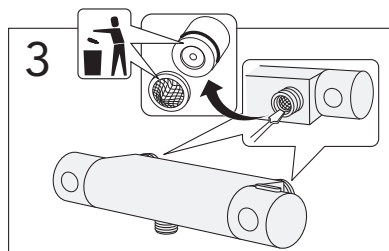
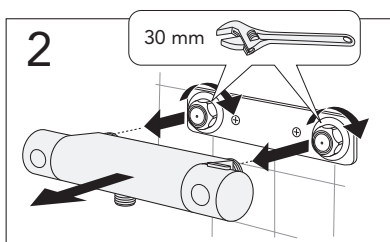
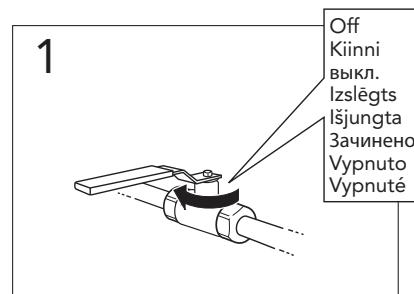
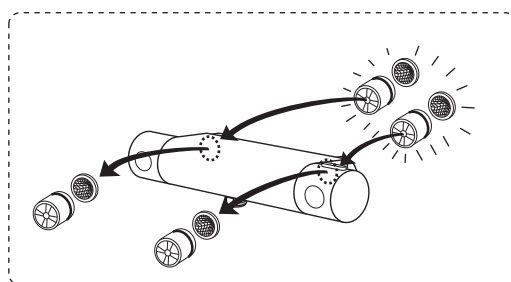




## SKANDIC 150 c-c

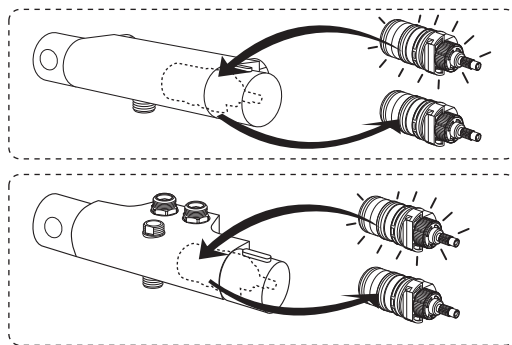


## SKANDIC 160 c-c





# SKANDIC



**1**

Off  
Киіни  
выкл.  
Izslēgts  
Išjungta  
Зачинено  
Уупнато  
Vupnuté

**2**

**3**

2.5 mm

**4**

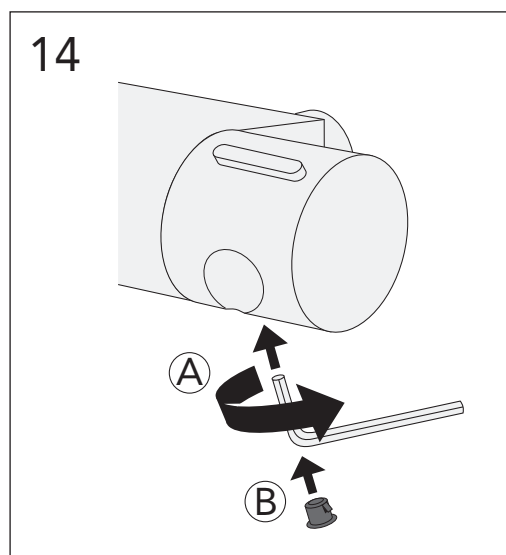
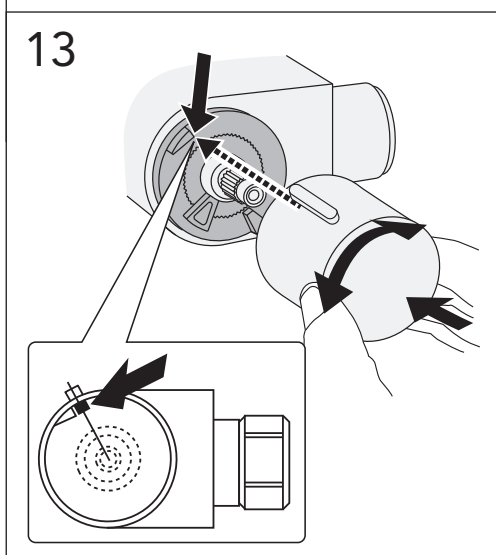
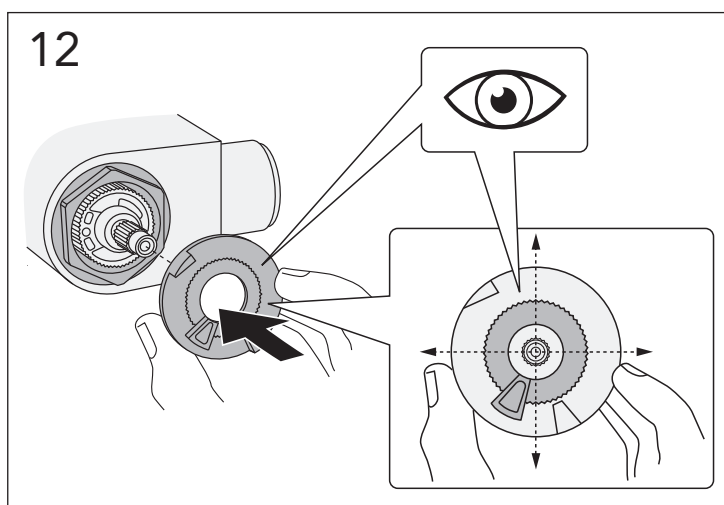
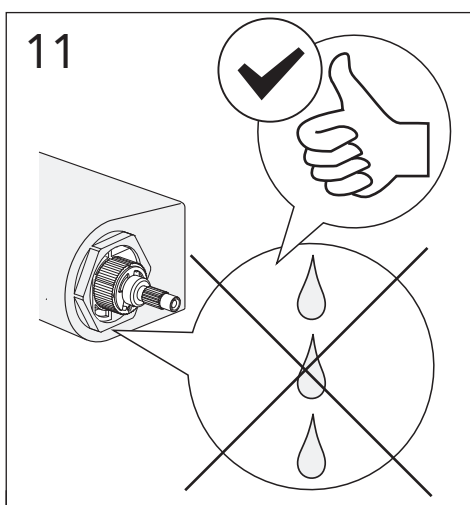
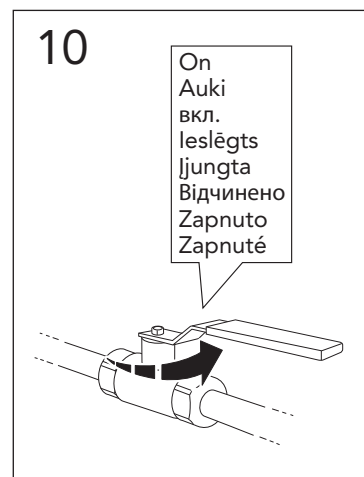
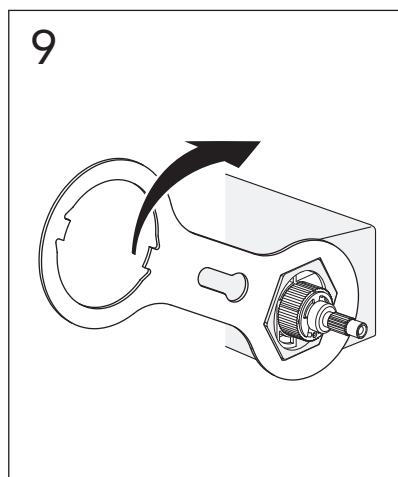
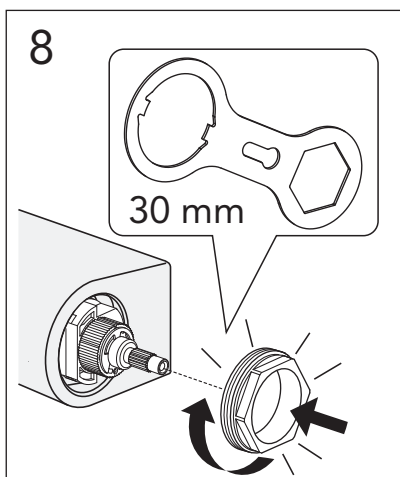
**5**

30 mm

**6**

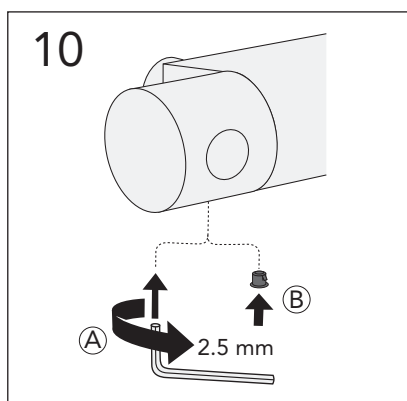
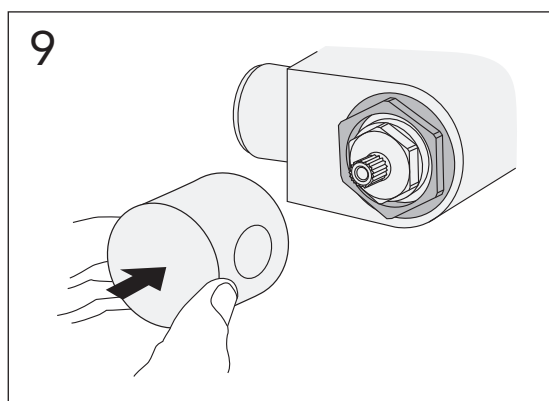
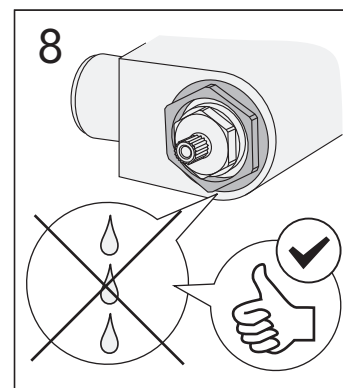
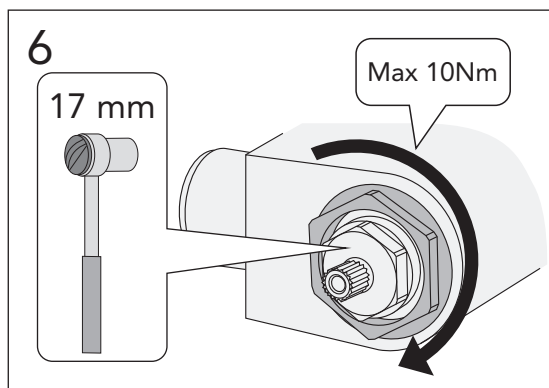
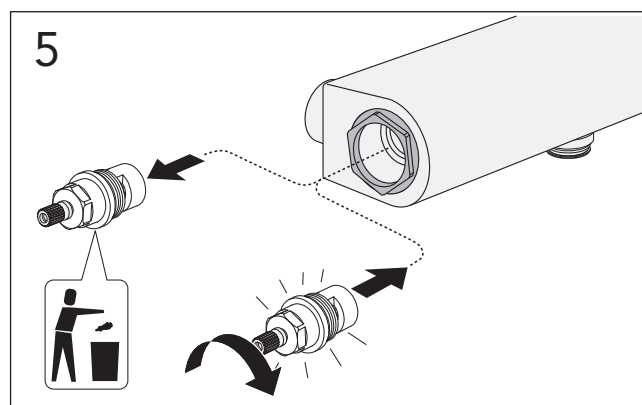
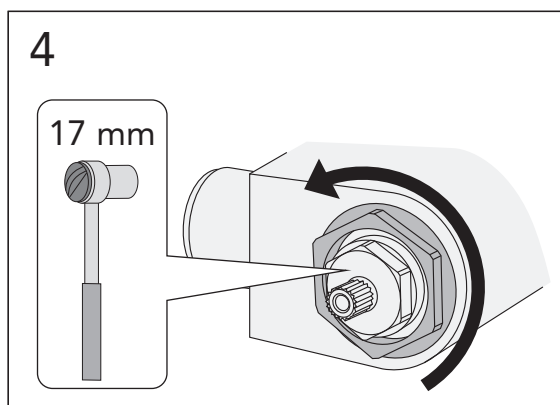
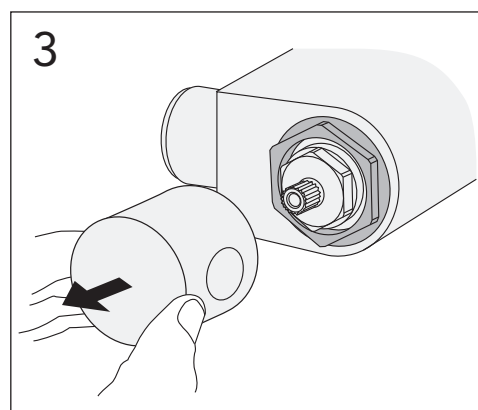
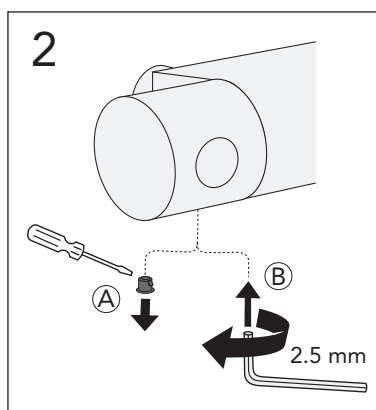
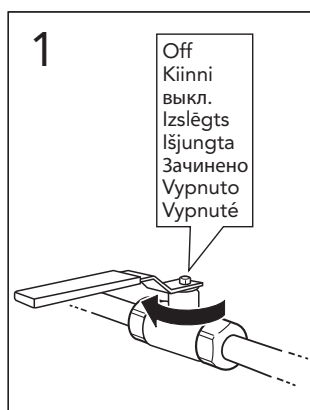
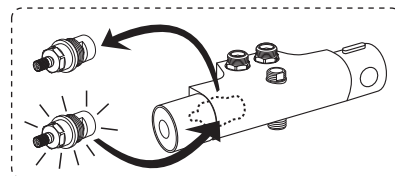
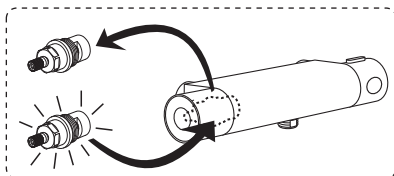
**7**





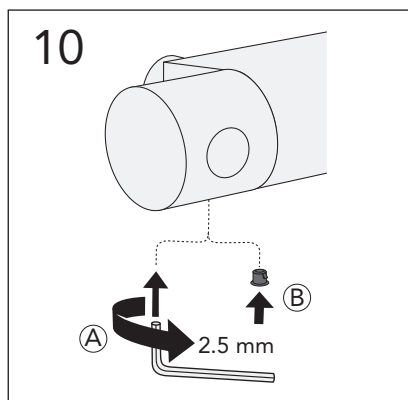
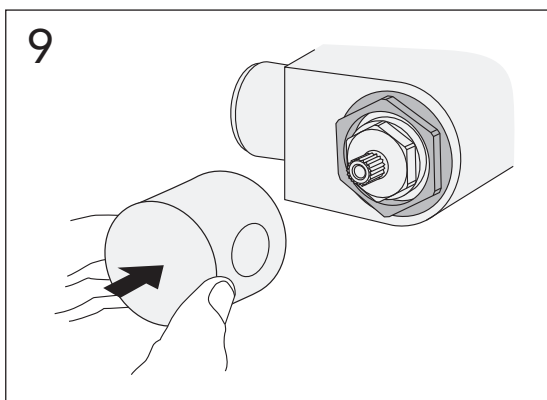
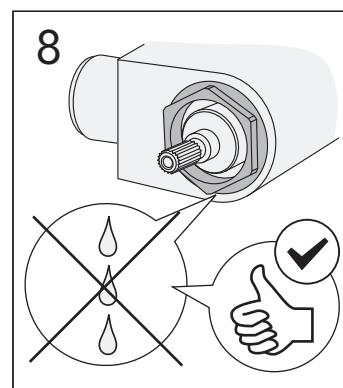
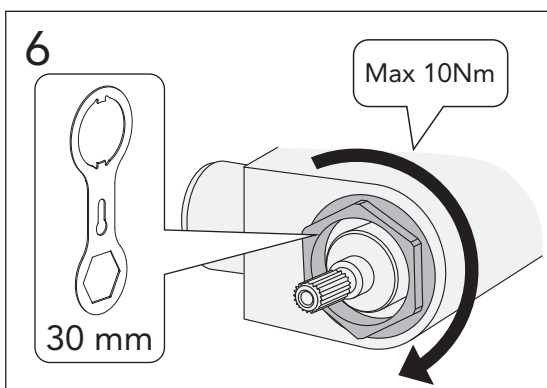
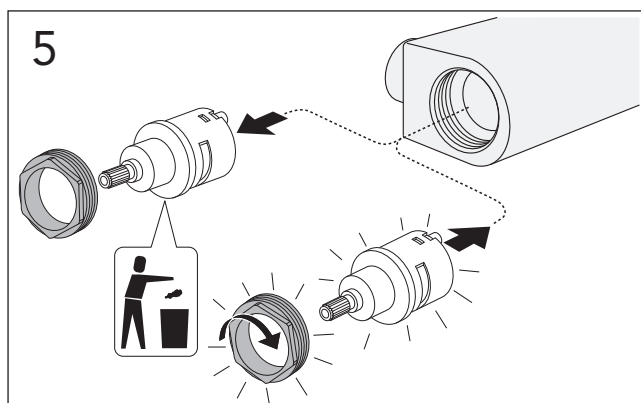
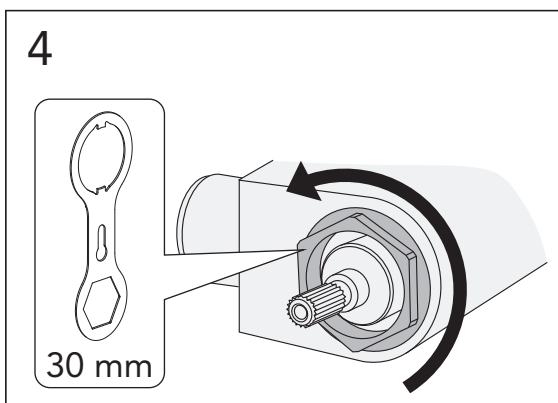
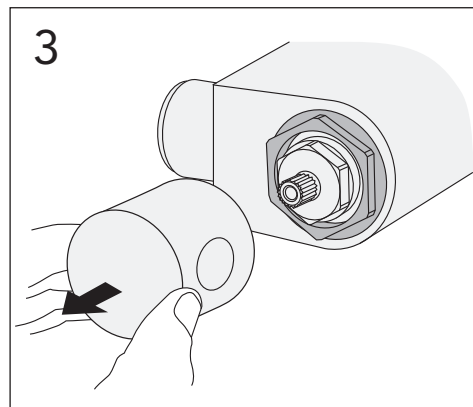
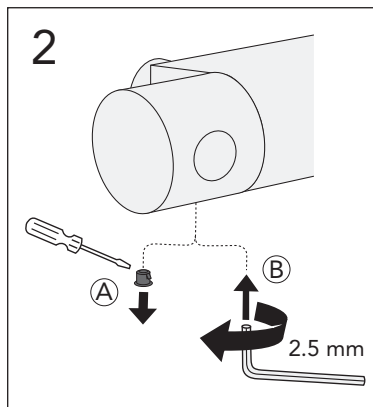
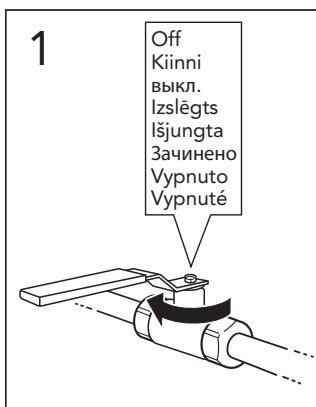
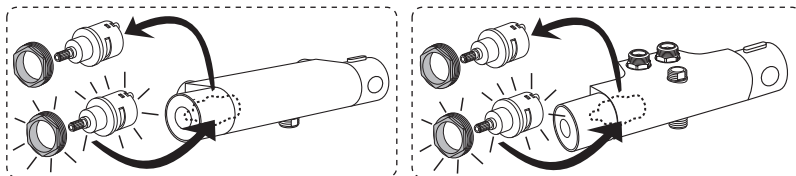


# SKANDIC



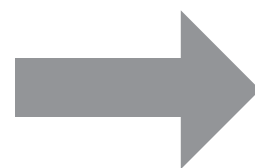
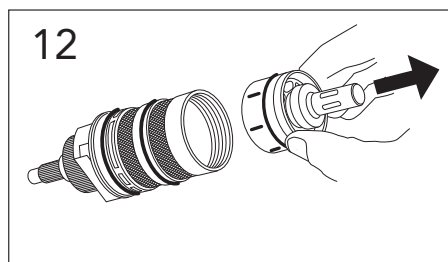
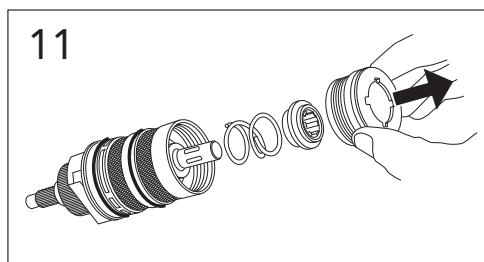
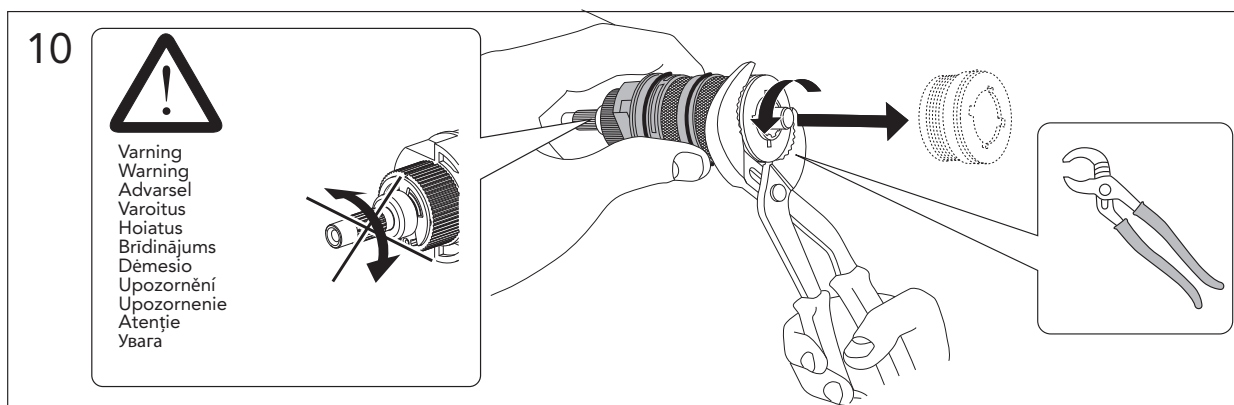
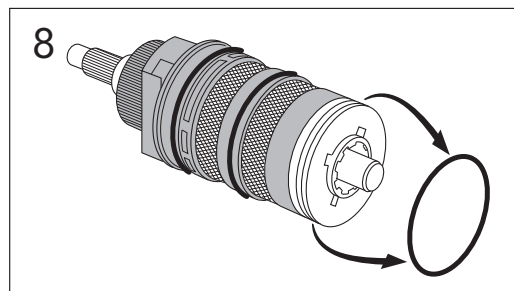
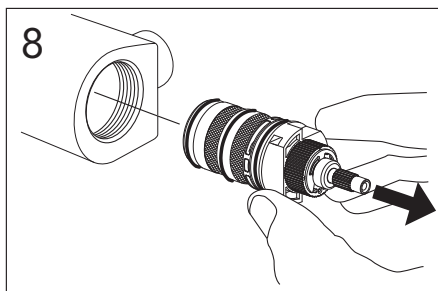
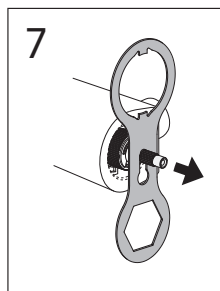
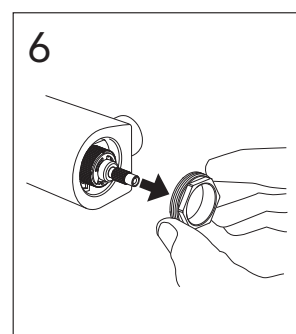
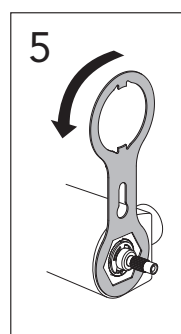
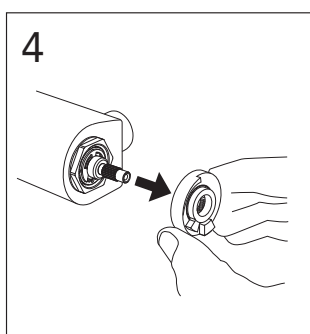
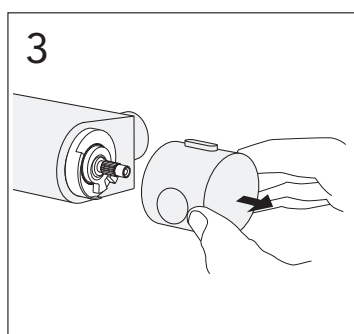
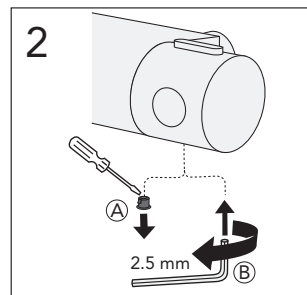
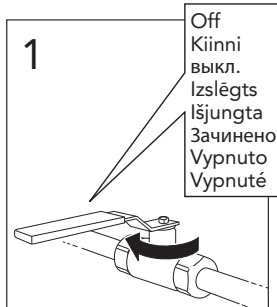
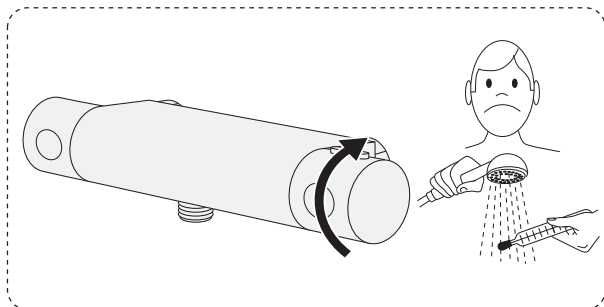
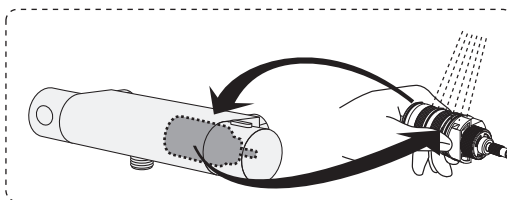


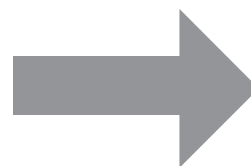
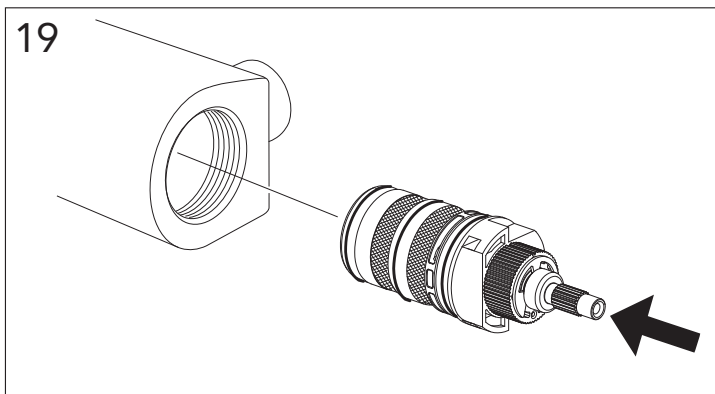
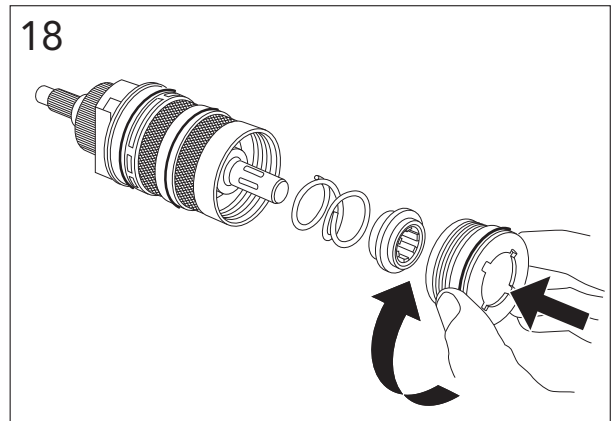
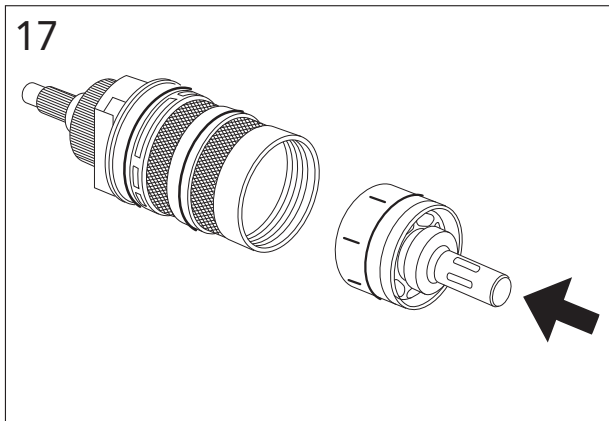
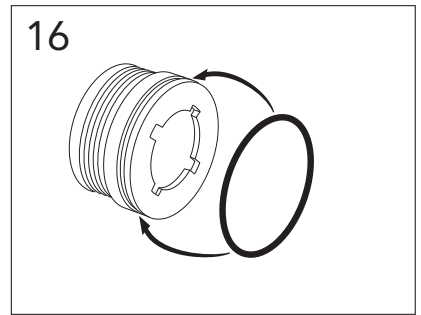
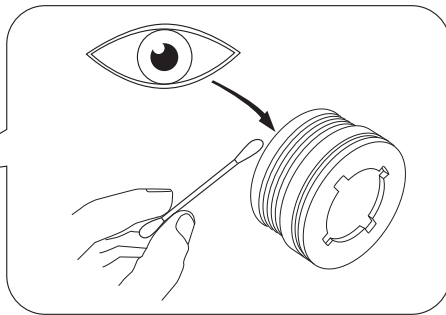
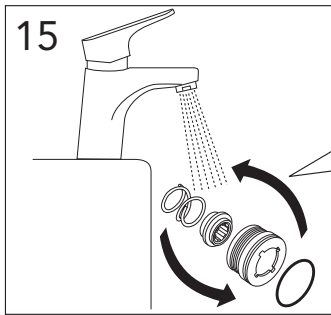
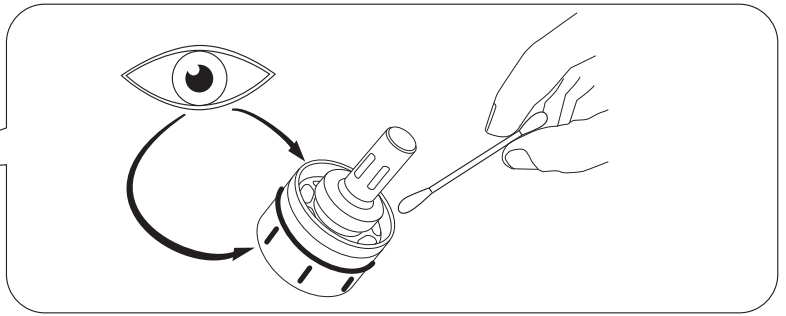
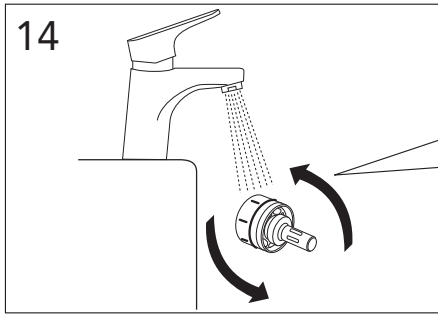
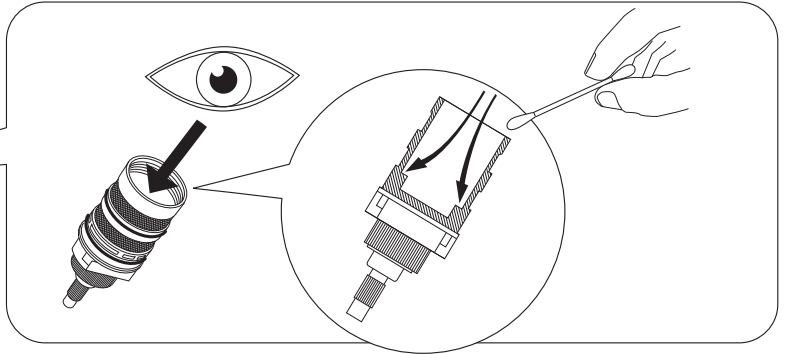
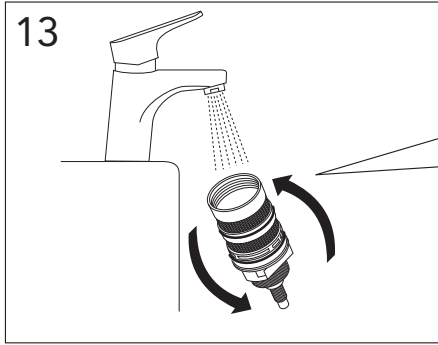
# SKANDIC

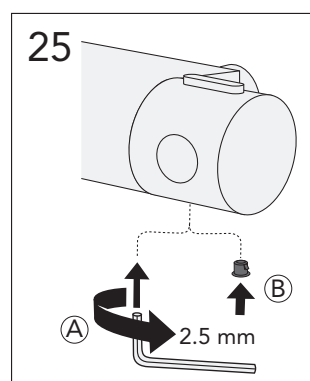
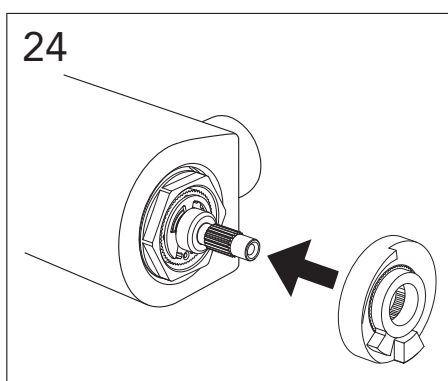
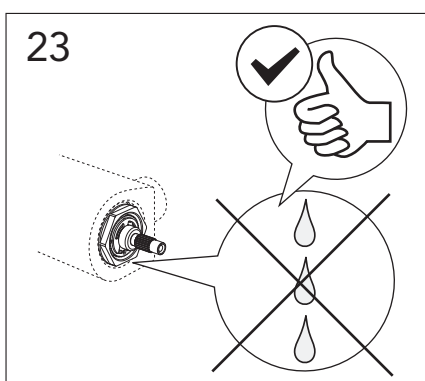
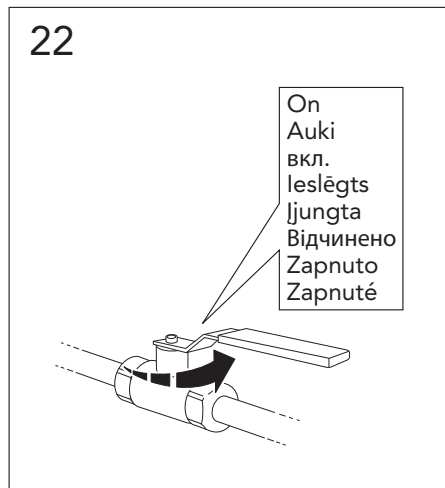
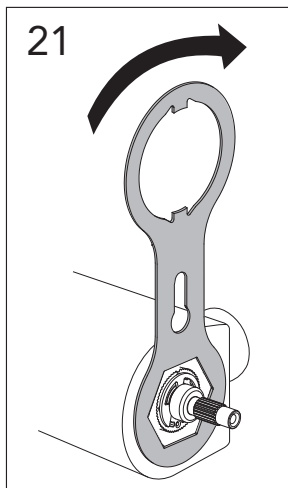
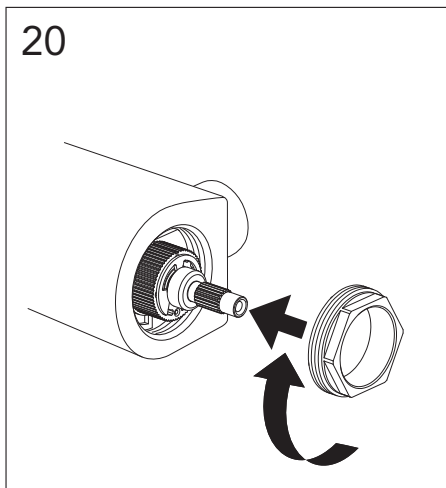




# SKANDIC









SWE	INSTRUKTION FÖR HETVATTEN GENOMSPOLNING
GBR	INSTRUCTIONS HOW TO DISINFECT
DEN	INSTRUKTION FOR VARMT VAND GENNEMSPULNING
NOR	INSTRUKSJON DESINFEKSJON/GJENNOMSPYLING MED VARMTVANN
FIN	OHJEET KUINKA SUORITTA KUUMAVESIHUUHTELU

#### SWE

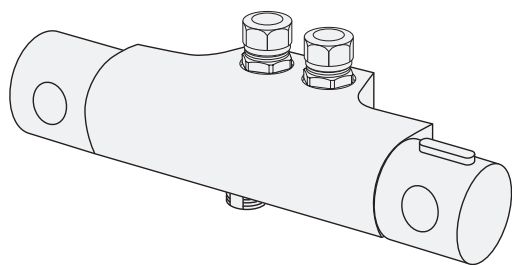
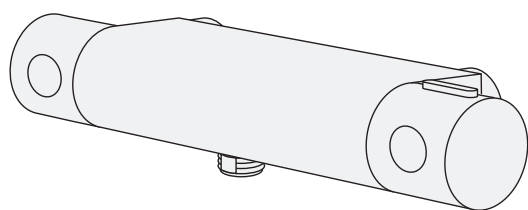
##### Desinficera

Används när installationssystemet har bakterietillväxt. För att skydda mot tillväxt ska du alltid använda dräneringsventil och duschslang som motverkar tillväxt av legionella.

#### GBR

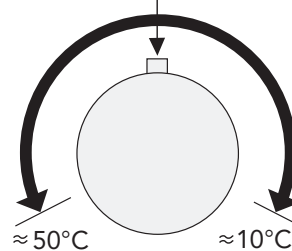
##### Disinfect

To be used when the installation system have bacteria growth. To protect from growth use always drain valve and shower hoses that reduces growth of legionella.



Komforttemperatur  
 Comfort temperature  
 Idealtemperatur  
 Komforttemperatur  
 Esiasetettu lämpötila  
 Комфортная температура  
 Mugav vee temperatuur  
 Komforta temperatūra  
 Komfortiška temperatūra  
 Комфортна температура  
 "Komfortni" teplota vody  
 "Komfortná" teplota vody

≈ 38°C



#### SWE

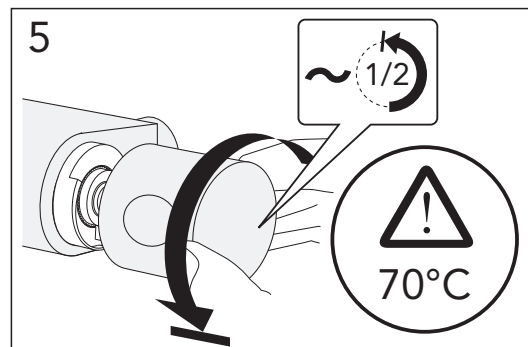
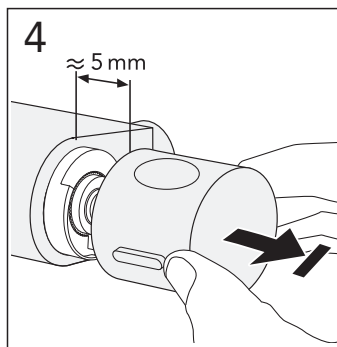
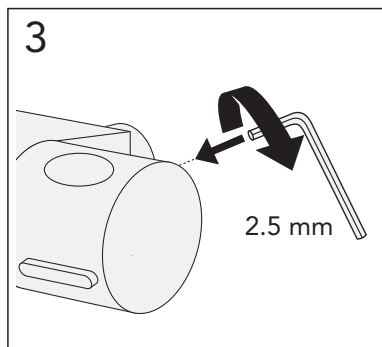
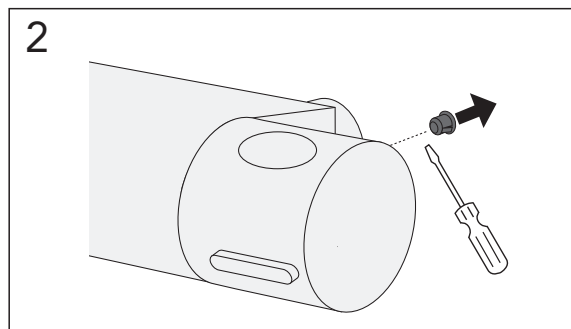
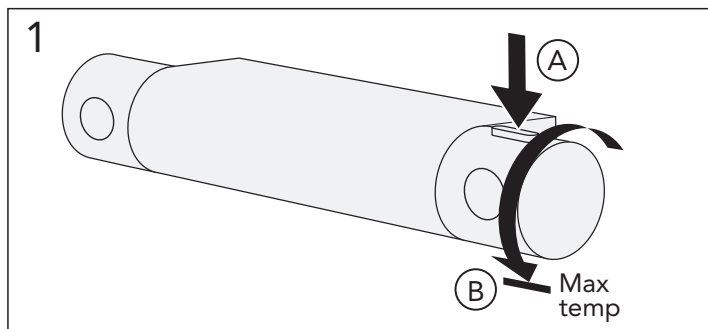
OBS: Viktigt att ansluten duschslang ( och Duschhandtag om anslutet) klarar hetvatten på upp till 70°, säkerställ också att det inte kommer hetvatten på någon person, **Skällningsrisk!**



#### GBR

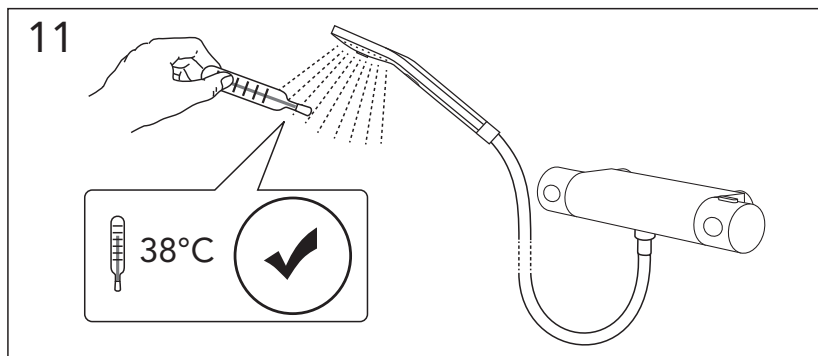
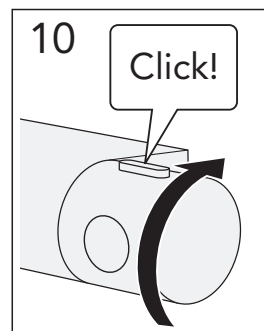
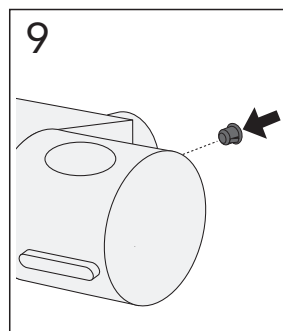
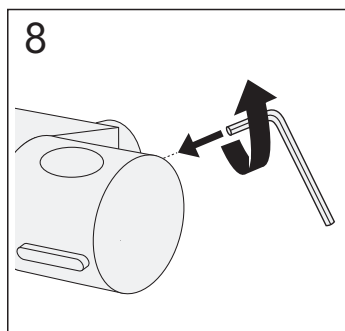
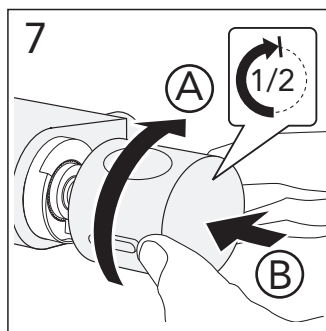
NOTE: It is important that the connected shower hose (and Handle if connected) can withstand hot water up to 70 °, ensure also that no person gets hot water, **risk of scalding!**





**6** SWE  
 OBS: Viktigt att ansluten duschslang (och Duschhandtag om anslutet) klarar hetvatten på upp till 70°, säkerställ också att det inte kommer hetvatten på någon person, **Skållningsrisk!**

GBR  
 NOTE: It is important that the connected shower hose (and Handle if connected) can withstand hot water up to 70 °, ensure also that no person gets hot water, **risk of scalding!**





RESERVELDELAR.  
RESERVEDELER.  
RESERVEDELE.  
VARAOSAT.  
SPARE PARTS.  
VARUOSAD.  
ATSARGINĖS DALYS.  
REZERVES DAŽAS.  
ЗАПАСНЫЕ ЧАСТИ.



DRIFT & SKÖTSEL  
DRIFT OG VEDLIGEHOJDELSE  
DRIFT OG VEDLIKEHOLD  
ASENNUS-, KÄYTTÖ- JA HOITO-OHJEET  
ASSEMBLY AND MAINTENANCE  
PAIGALDAMINE & HOOLDAMINE  
MONTAZA UN KOPSANA  
MONTAVIMAS IR PRIEŽIURA  
УСТАНОВКА И УХОД



A MEMBER OF THE  
VILLEROY & BOCH GROUP

Sweden  
[www.gustavsberg.com/se/](http://www.gustavsberg.com/se/)

Denmark  
[www.gustavsberg.com/dk/](http://www.gustavsberg.com/dk/)

Norway  
[www.gustavsberg.com/no/](http://www.gustavsberg.com/no/)

Suomi/Finland  
[www.gustavsberg.com/fi/](http://www.gustavsberg.com/fi/)

Estonia  
[www.gustavsberg.com/ee/](http://www.gustavsberg.com/ee/)

Latvia  
[www.gustavsberg.com/lv/](http://www.gustavsberg.com/lv/)

Lithuania  
[www.gustavsberg.com/lt/](http://www.gustavsberg.com/lt/)

Україна  
[www.gustavsberg.com/ua/](http://www.gustavsberg.com/ua/)

Россия  
[www.gustavsberg.com/ru/](http://www.gustavsberg.com/ru/)