



# ATSARGINĖS DALYS

„GUSTAVSBERG“ UNITAZŲ 1977–2005



325 T  
1977 - 1986



325 X  
1985 - 1995



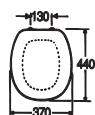
NORDIC-BASIC 390  
1992 - 2002



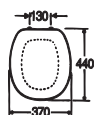
NORDIC-BASIC 390  
1992 - 2002



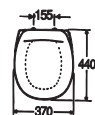
SKANDIC 330  
1995 - 2005



STANDARD SEAT  
AND COVER  
GB192 9900 226



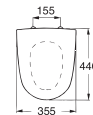
STANDARD SEAT  
AND COVER  
GB192 9900 226



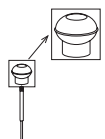
STANDARD SEAT  
AND COVER  
GB191 9901 702



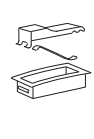
STANDARD SEAT  
AND COVER  
GB191 9901 702



HARD PLASTIC SEAT  
AND COVER  
GB191 99001601



NP-11 PUSHBUTTON  
GB192 9900 237



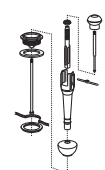
NT-21 PUSHBUTTON  
GB192 9900 208



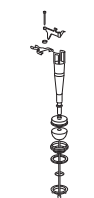
ST-17 CISTERN  
COVER WITH  
PUSHBUTTON  
GB192 9900 283



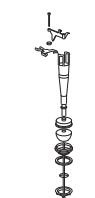
ST-24 CISTERN  
COVER WITH  
PUSHBUTTON  
GB192 9900 338



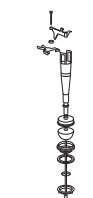
NP-20 OUTLET VALVE  
GB192 9900 238



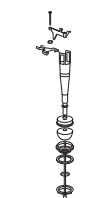
ST OUTLET VALVE  
GB192 9900 282



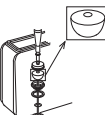
ST OUTLET VALVE  
GB192 9900 282



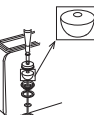
ST OUTLET VALVE  
GB192 9900 282



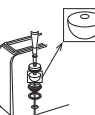
ST OUTLET VALVE  
GB192 9900 282



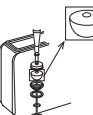
NC VALVEBALL  
GB192 9900 260



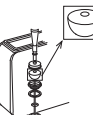
NC VALVEBALL  
GB192 9900 260



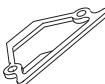
NC VALVEBALL  
GB192 9900 260



NC VALVEBALL  
GB192 9900 260



NC VALVEBALL  
GB192 9900 260



CISTERN SEALING  
GB192 9900 216



CISTERN SEALING  
GB192 9900 216



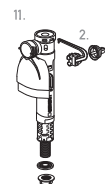
CISTERN SEALING  
GB192 9900 320



CISTERN SEALING  
GB192 9900 320



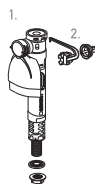
CISTERN SEALING  
GB192 9900 344



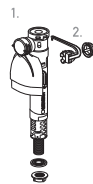
1. GB-INLET VALVE  
GB192 9901 972  
2. GB-MEMBRAN  
RETAIL PACKAGE  
GB192 99P0 206



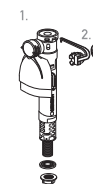
1. GB-INLET VALVE  
GB192 9901 972  
2. GB-MEMBRAN  
RETAIL PACKAGE  
GB192 99P0 206



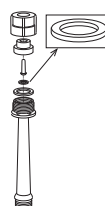
1. GB-INLET VALVE  
GB192 9901 972  
2. GB-MEMBRAN  
RETAIL PACKAGE  
GB192 99P0 206



1. GB-INLET VALVE  
GB192 9901 972  
2. GB-MEMBRAN  
RETAIL PACKAGE  
GB192 99P0 206



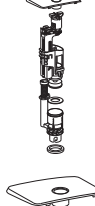
1. GB-INLET VALVE  
GB192 9901 972  
2. GB-MEMBRAN  
RETAIL PACKAGE  
GB192 99P0 206



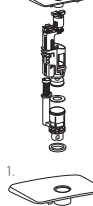
TF-11 RUBBER  
MEMBRANE  
GB192 9900 229



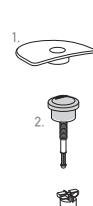
TF-11 RUBBER  
MEMBRANE  
GB192 9900 229



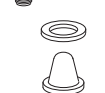
REPLACEMENT  
OUTLET VALVE  
TWICO II DUO  
GB192 99U2 937



REPLACEMENT  
OUTLET VALVE  
TWICO II DUO  
GB192 99U2 937



1. CISTERN COVER  
GB19299T2800  
2. PUSHBUTTON  
DUO  
GB192 99T2 951  
PUSHBUTTON  
SINGLE  
GB192 99T2 952



TF-9 FILTER  
GB192 9900 228



TF-9 FILTER  
GB192 9900 228



1. CISTERN COVER  
GB19299U1931  
2. PUSHBUTTON  
DUO  
GB192 99T2 951  
PUSHBUTTON  
SINGLE  
GB192 99T2 952



1. CISTERN COVER  
GB19299U1931  
2. PUSHBUTTON  
DUO  
GB192 99T2 951  
PUSHBUTTON  
SINGLE  
GB192 99T2 952



REPLACEMENT  
VALVE DUO  
GB192 99 T2953  
REPLACEMENT  
VALVE SINGLE  
GB192 99 T2954  
GASKET  
GB19299U2940

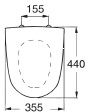


# ATSARGINĖS DALYS

„GUSTAVSBERG“ UNITAZŲ 1998-



**CLASSIC 360-364**  
1998 - 2007



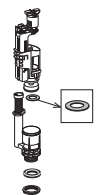
HARD PLASTIC SEAT AND COVER. WHITE  
GB191 9901 601  
BLACK  
GB191 9901 610



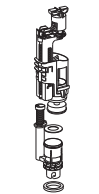
CISTERN SEALING  
GB192 9900 344



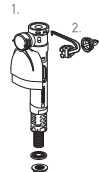
1. CISTERN COVER TWICO  
GB192 99T1 929  
2. PUSHBUTTON DUO  
GB192 99T2 951  
PUSHBUTTON SINGLE  
GB192 99T2 952



BOTTOM VALVE GASKET TWICO  
GB192 99TK 962



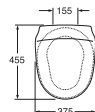
OUTLET VALVE DUO  
GB192 99 T2953  
OUTLET VALVE SINGLE  
GB192 99 T2954  
BOTTOM VALVE GASKET  
GB19299U2940



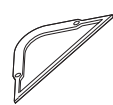
1. GB-INLET VALVE  
GB192 9901 972  
2. GB-MEMBRANE PACKAGE  
GB192 99P0 206



**NORDIC 23XX**  
2002 -



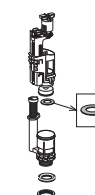
STANDARD SEAT AND COVER  
GB191 9902 002



CISTERN SEALING  
GB192 9900 320



1. CISTERN COVER  
GB192 99K1 931  
2. PUSHBUTTON DUO  
GB192 99T2 951  
PUSHBUTTON SINGLE  
GB192 99T2 952



BOTTOM VALVE GASKET TWICO\*  
GB192 99TK 962



OUTLET VALVE DUO\*  
GB192 99 T2953  
OUTLET VALVE SINGLE  
GB192 99 T2954

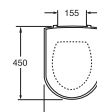


1. GB-INLET VALVE\*  
GB192 9901 972  
2. GB-MEMBRANE PACKAGE  
GB192 99P0 206

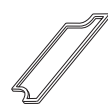
\*Also fits for Nordic 339, 393U and 398



**ARTIC 43XX**  
2005 -



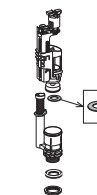
HARD PLASTIC SEAT AND COVER  
9M16S101



CISTERN SEALING  
GB192 9900 504



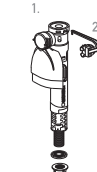
1. CISTERN COVER  
GB192 9900 500  
2. PUSHBUTTON DUO  
GB192 99T2 951  
PUSHBUTTON SINGLE  
GB192 99T2 952



BOTTOM VALVE GASKET TWICO  
GB192 99TK 962



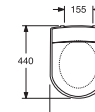
OUTLET VALVE DUO  
GB192 99 T2953  
OUTLET VALVE SINGLE  
GB192 99 T2954



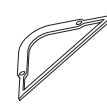
1. GB-INLET VALVE  
GB1929901972  
2. GB-MEMBRANE PACKAGE  
GB192 99P0 206



**LOGIC 56XX**  
2007 -



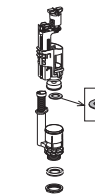
HARD PLASTIC SEAT AND COVER  
9M016101



CISTERN SEALING 5696  
GB192 9900 320  
CISTERN SEALING 5695  
GB192 1100 209



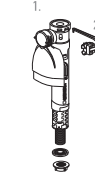
1. CISTERN COVER  
8193 B9 01  
2. PUSHBUTTON DUO  
GB192 99T2 951  
PUSHBUTTON SINGLE  
GB192 99T2 952



BOTTOM VALVE GASKET TWICO  
GB192 99TK 962



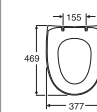
OUTLET VALVE DUO  
GB192 99 T2953  
OUTLET VALVE SINGLE  
GB192 99 T2954



1. GB-INLET VALVE  
GB192 9901 972  
2. GB-MEMBRANE PACKAGE  
GB192 99P0 206



**NAUTIC 55XX**  
2010 -



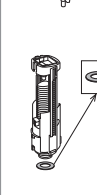
STANDARD COVER  
9M246101



ACTUATOR DUAL, WHITE  
GB19299P0108  
ACTUATOR DUAL, CHROME  
GB19299P0110



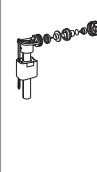
ACTUATOR SINGLE, WHITE  
GB19299P0109  
ACTUATOR SINGLE, CHROME  
GB19299P0111



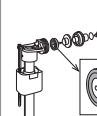
BOTTOM VALVE GASKET TWICO  
GB19299TK962



OUTLET VALVE  
GB19299P0102



FILL VALVE COMPLETE  
GB19299P0105



MEMBRANE  
GB19299P0106