



REZERVES DAĻAS

GUSTAVSBERG TUALETES PODIEM 1977-2005



325 T
1977 - 1986



325 X
1985 - 1995



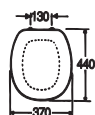
NORDIC-BASIC 390
1992 - 2002



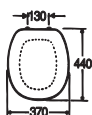
NORDIC-BASIC 390
1992 - 2002



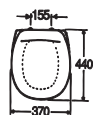
SKANDIC 330
1995 - 2005



STANDARD SEAT
AND COVER
GB192 9900 226



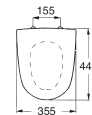
STANDARD SEAT
AND COVER
GB192 9900 226



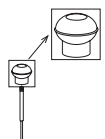
STANDARD SEAT
AND COVER
GB191 9901 702



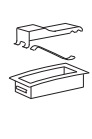
STANDARD SEAT
AND COVER
GB191 9901 702



HARD PLASTIC SEAT
AND COVER
GB191 99001601



NP-11 PUSHBUTTON
GB192 9900 237



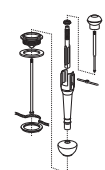
NT-21 PUSHBUTTON
GB192 9900 208



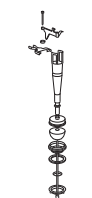
ST-17 CISTERN
COVER WITH
PUSHBUTTON
GB192 9900 283



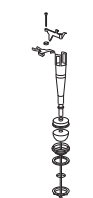
ST-24 CISTERN
COVER WITH
PUSHBUTTON
GB192 9900 338



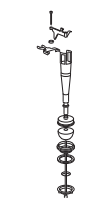
NP-20 OUTLET VALVE
GB192 9900 238



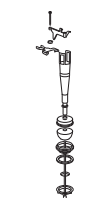
ST OUTLET VALVE
GB192 9900 282



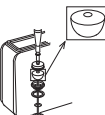
ST OUTLET VALVE
GB192 9900 282



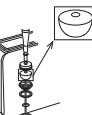
ST OUTLET VALVE
GB192 9900 282



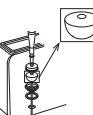
ST OUTLET VALVE
GB192 9900 282



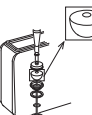
NC VALVEBALL
GB192 9900 260



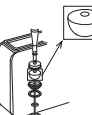
NC VALVEBALL
GB192 9900 260



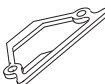
NC VALVEBALL
GB192 9900 260



NC VALVEBALL
GB192 9900 260



NC VALVEBALL
GB192 9900 260



CISTERN SEALING
GB192 9900 216



CISTERN SEALING
GB192 9900 216



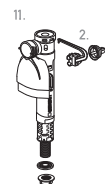
CISTERN SEALING
GB192 9900 320



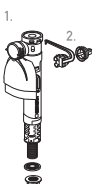
CISTERN SEALING
GB192 9900 320



CISTERN SEALING
GB192 9900 344



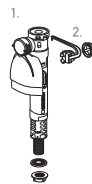
1. GB-INLET VALVE
GB192 9901 972
2. GB-MEMBRAN
RETAIL PACKAGE
GB192 99P0 206



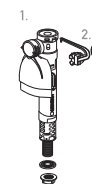
1. GB-INLET VALVE
GB192 9901 972
2. GB-MEMBRAN
RETAIL PACKAGE
GB192 99P0 206



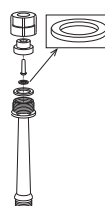
1. GB-INLET VALVE
GB192 9901 972
2. GB-MEMBRAN
RETAIL PACKAGE
GB192 99P0 206



1. GB-INLET VALVE
GB192 9901 972
2. GB-MEMBRAN
RETAIL PACKAGE
GB192 99P0 206



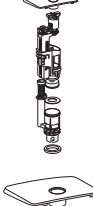
1. GB-INLET VALVE
GB192 9901 972
2. GB-MEMBRAN
RETAIL PACKAGE
GB192 99P0 206



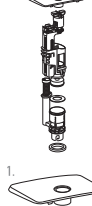
TF-11 RUBBER
MEMBRANE
GB192 9900 229



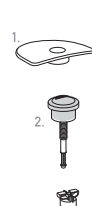
TF-11 RUBBER
MEMBRANE
GB192 9900 229



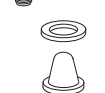
REPLACEMENT
OUTLET VALVE
TWICO II DUO
GB192 99U2 937



REPLACEMENT
OUTLET VALVE
TWICO II DUO
GB192 99U2 937



1. CISTERN COVER
GB19299T2800
2. PUSHBUTTON
DUO
GB192 99T2 951
PUSHBUTTON
SINGLE
GB192 99T2 952



TF-9 FILTER
GB192 9900 228



TF-9 FILTER
GB192 9900 228



1. CISTERN COVER
GB19299U1931
2. PUSHBUTTON
DUO
GB192 99T2 951
PUSHBUTTON
SINGLE
GB192 99T2 952



1. CISTERN COVER
GB19299U1931
2. PUSHBUTTON
DUO
GB192 99T2 951
PUSHBUTTON
SINGLE
GB192 99T2 952



REPLACEMENT
VALVE DUO
GB192 99 T2953
REPLACEMENT
VALVE SINGLE
GB192 99 T2954
GASKET
GB19299U2940

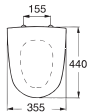


REZERVES DAĻAS

GUSTAVSBERG TUALETES PODIEM 1998-



CLASSIC 360-364
1998 - 2007



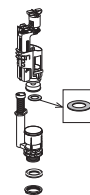
HARD PLASTIC SEAT AND COVER. WHITE
GB191 9901 601
BLACK
GB191 9901 610



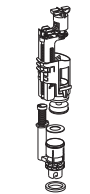
CISTERN SEALING
GB192 9900 344



1. CISTERN COVER TWICO
GB192 99T1 929
2. PUSHBUTTON DUO
GB192 99T2 951
PUSHBUTTON SINGLE
GB192 99T2 952



BOTTOM VALVE GASKET TWICO
GB192 99TK 962



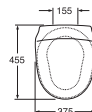
OUTLET VALVE DUO
GB192 99 T2953
OUTLET VALVE SINGLE
GB192 99 T2954
BOTTOM VALVE GASKET
GB19299U2940



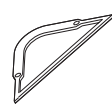
1. GB-INLET VALVE
GB192 9901 972
2. GB-MEMBRANE PACKAGE
GB192 99P0 206



NORDIC 23XX
2002 -



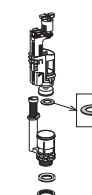
STANDARD SEAT AND COVER
GB191 9902 002



CISTERN SEALING
GB192 9900 320



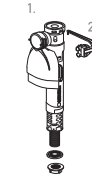
1. CISTERN COVER
GB192 99K1 931
2. PUSHBUTTON DUO
GB192 99T2 951
PUSHBUTTON SINGLE
GB192 99T2 952



BOTTOM VALVE GASKET TWICO*
GB192 99TK 962



OUTLET VALVE DUO*
GB192 99 T2953
OUTLET VALVE SINGLE
GB192 99 T2954

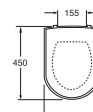


1. GB-INLET VALVE*
GB192 9901 972
2. GB-MEMBRANE PACKAGE
GB192 99P0 206

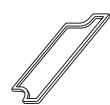
*Also fits for Nordic 339, 393U and 398



ARTIC 43XX
2005 -



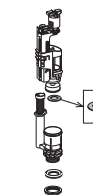
HARD PLASTIC SEAT AND COVER
9M16S101



CISTERN SEALING
GB192 9900 504



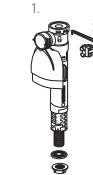
1. CISTERN COVER
GB192 9900 500
2. PUSHBUTTON DUO
GB192 99T2 951
PUSHBUTTON SINGLE
GB192 99T2 952



BOTTOM VALVE GASKET TWICO
GB192 99TK 962



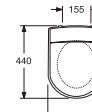
OUTLET VALVE DUO
GB192 99 T2953
OUTLET VALVE SINGLE
GB192 99 T2954



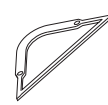
1. GB-INLET VALVE
GB1929901972
2. GB-MEMBRANE PACKAGE
GB192 99P0 206



LOGIC 56XX
2007 -



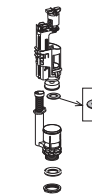
HARD PLASTIC SEAT AND COVER
9M016101



CISTERN SEALING 5696
GB192 9900 320
CISTERN SEALING 5695
GB192 1100 209



1. CISTERN COVER
8193 B9 01
2. PUSHBUTTON DUO
GB192 99T2 951
PUSHBUTTON SINGLE
GB192 99T2 952



BOTTOM VALVE GASKET TWICO
GB192 99TK 962



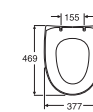
OUTLET VALVE DUO
GB192 99 T2953
OUTLET VALVE SINGLE
GB192 99 T2954



1. GB-INLET VALVE
GB192 9901 972
2. GB-MEMBRANE PACKAGE
GB192 99P0 206



NAUTIC 55XX
2010 -



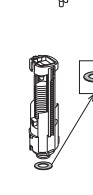
STANDARD COVER
9M246101



ACTUATOR DUAL, WHITE
GB19299P0108
ACTUATOR DUAL, CHROME
GB19299P0110



ACTUATOR SINGLE, WHITE
GB19299P0109
ACTUATOR SINGLE, CHROME
GB19299P0111



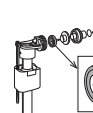
BOTTOM VALVE GASKET TWICO
GB19299TK962



OUTLET VALVE
GB19299P0102



FILL VALVE COMPLETE
GB19299P0105



MEMBRANE
GB19299P0106