



SMARTER
BATHROOMS

TRIOMONT

THE SIMPLEST APPROACH TO WALL-MOUNTED WCS AND WASHBASINS



ALL YOU NEED ARE A BATHROOM AND 14 CM.

Do you have a bathroom where you would love to install a wall-mounted WC and washbasin? But are you worried that they might be a bit tricky to install? Concerned that your bathroom is too small, and that you may have to tear down walls and reinstall the wetroom membrane? Don't worry – Triomont is a system from Gustavsberg that makes it quick and simple to turn your dream into reality. The system suits most bathrooms, there is no need for costly renovation work, and you can even install it in corners and small spaces with a minimum of surface loss. In fact, all you need is at least 14 cm of depth.

This brochure presents a step-by-step description of what you need to do to install a Triomont fixture from Gustavsberg in your existing bathroom. Of course, you can always use Triomont if you are building a completely new bathroom from scratch. Just remember that special regulations and requirements apply to wetrooms. A wetroom membrane prepared by a professional craftsman is the best guarantee against moisture damage. You can install most of our products yourself, but we recommend that you call on a professional fitter to help you with WC fixtures. If you choose to do the work yourself, it is a good idea to consult a professional first – your reseller, plumber or a specialist at your local DIY store.



FIXTURES IN POSITION

A double set of wall fittings is used to secure our Triomont XS and XT fixtures to the wall. This leaves the wetroom membrane in the floor intact.

NEAT, COMFORTABLE, PRACTICAL AND HYGIENIC.

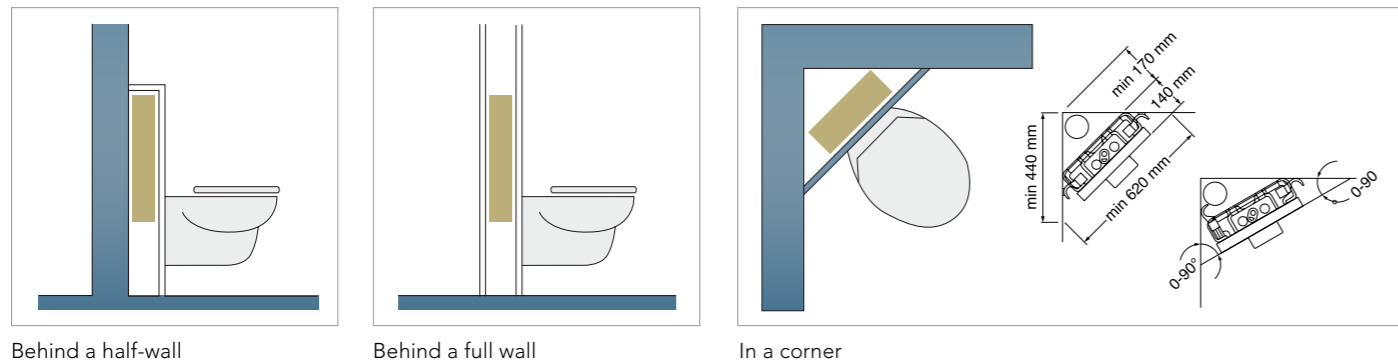
There are many good reasons for choosing wall-mounted products. They allow you to make full use of the bathroom space, and even make the room appear larger. In addition, they are easy to clean and therefore hygienic. However, it is important to make sure that the area where the fixture is positioned is fitted with a wetroom membrane. If you are installing a Triomont product in your existing bathroom with a new wall in front, this problem is already solved. Just make sure to seal all holes you drill in the bathroom wall tightly with silicone. If you build a half wall, you can use the top of it for storage or as pure decoration. The top panel must be removable so that you can access the cistern in the event that you need to adjust it in future. If the fixture is installed behind a full-height wall, service can be performed via the hole behind the control panel.

There is also a fixture for installing a wall-mounted washbasin. With this there will be no need to add extra reinforcement to the wall – and the result will be a neat, simple and stable installation. And with the wall-fitted drain connection, almost all the pipework will be hidden from view.

YOUR NEW BATHROOM

In this bathroom, we have chosen to install a freely positionable pneumatic (air-controlled) flush button. The low XT fixture is most suitable with this button.

THREE TRIOMONT SOLUTIONS



GOOD TO KNOW ABOUT TRIOMONT

Triomont is a simple and flexible system, both for the fitters and for the people who use the bathroom. The design and all the materials are of the highest quality. It meets the most stringent test requirements for load bearing: 400 kg. In other words, you need not worry about whether the construction will take your weight.

CONTROL PANELS

Control panels in a variety of models and materials make it easy for you to find a style that matches your taste and bathroom layout. There are control panels for wall or top-mounting, and for single and double flush solutions. You can even choose between control panels for mechanical or pneumatic flushing. The pneumatic single flush solution allows you to place the button anywhere you like near your WC – as long as it is no more than 1.5 metres away.

TOILET BOWLS

All toilet bowls from Gustavsberg can be combined with Triomont WC fixtures. The distance between the bolts for fixing the toilet bowl in place is 180 or 230 mm to accommodate different types of bowls. As Gustavsberg is a part of Villeroy & Boch, you can also choose from this company's range of toilet bowls. If you set the distance between the bolts to 180 mm, you can use all toilet bowl models from Gustavsberg or Villeroy & Boch. There are models to suit everyone: children, tall people, short people, heavily built people, and people with special needs. There are large bowls and small bowls. There are bowls for corner installations and small spaces. And all the bowls match the Triomont fixtures from Gustavsberg – of course. The various bowl models are presented later in this brochure.

WASHBASINS

The adjustable washbasin fixture can be used for all washbasins with a centre-to-centre bolt distance of up to 280 mm. The advantage of this solution is that it conceals all water and drain pipes. All our washbasin models are presented on our website and in our complete bathroom brochure: Bathrooms from Gustavsberg. Visit our website at www.gustavsberg.com to order or download a copy of this brochure.

PRACTICAL

The fixture is supplied with protective covers for the connections to the WC and wall control panels. This makes installation easier and helps prevent damage during fitting. No special tools are required to maintain or to replace the float and flush valve. The shut-off valve is easily accessible in the cistern. You can access the cistern either via the wall- or via the top control panel – if you have installed the Triomont fixture behind a half-wall.

DIMENSIONS, FITTING AND PROTECTION AGAINST WATER DAMAGE

The fixture is only 380 mm wide, which makes it easier to fit into corners and compact spaces, and special brackets are available to make corner mounting even easier. Thanks to the slim dimensions, the fixture can easily be fitted in walls with a centre-to-centre stud distance of 450 mm. Four wall brackets are included in the delivery so there is no need for you to drill into the floor. These brackets provide better protection against water damage and constitute a more practical solution if you have under-floor heating pipes and do not want to risk drilling into them.

PLUMBING

The water connection to the WC can be made from the top or from the side of the cistern (see the installation instructions for the individual models). Extra long drain pipes/flush pipes for thick walls are included. The inner tank is designed for connection using pipe-in-pipe technology. It can accommodate protective pipes with a dimension of 18–28 mm and can be connected to a drain system with a dimension of 90 or 110 mm. An eccentric sleeve – 90/110 mm – is also included. It is simple to fit the drain trap, which can easily be turned if you want the connection to the right or left of the fixture. Insulation protection for fitting between the toilet bowl and the wall is included. This evens out minor irregularities in the wall behind the toilet bowl.



IMPORTANT TO REMEMBER:

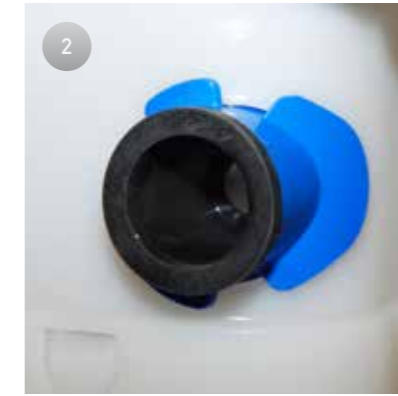
Make sure to perform the installation professionally according to the guidelines and rules supplied. This will eliminate the risk of water damage. You can also watch our installation video online at www.gustavsberg.com



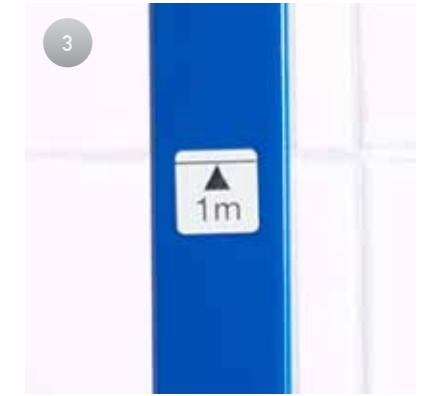
A CLOSER LOOK AT THE TRIOMONT FIXTURE



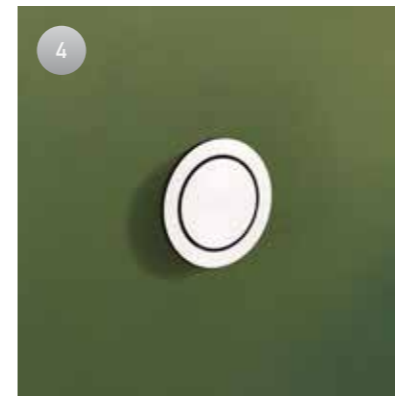
Upper wall fitting. Can be replaced with a corner fitting for corner installation.



Lead-through for pipe-in-pipe system – protective pipe, 18–28 mm. The picture shows Triomont XT. On the XS model the blue part does not exist.



Installed 1 metre above the finished floor, provides a sitting height of approx. 410 mm. Adjustable up to 610 mm.



Pneumatic single flush button, can be fitted up to 1.5 m from the fixture. All control panels/flush buttons are presented on page 12.



Adjustable distance between bolts (centre to centre): 180 or 230 mm. With a centre to centre distance of 180 mm, suits all toilet bowls from Gustavsberg and Villeroy & Boch.



Angled drain connection and 90 x 110 mm eccentric sleeve for simple installation.



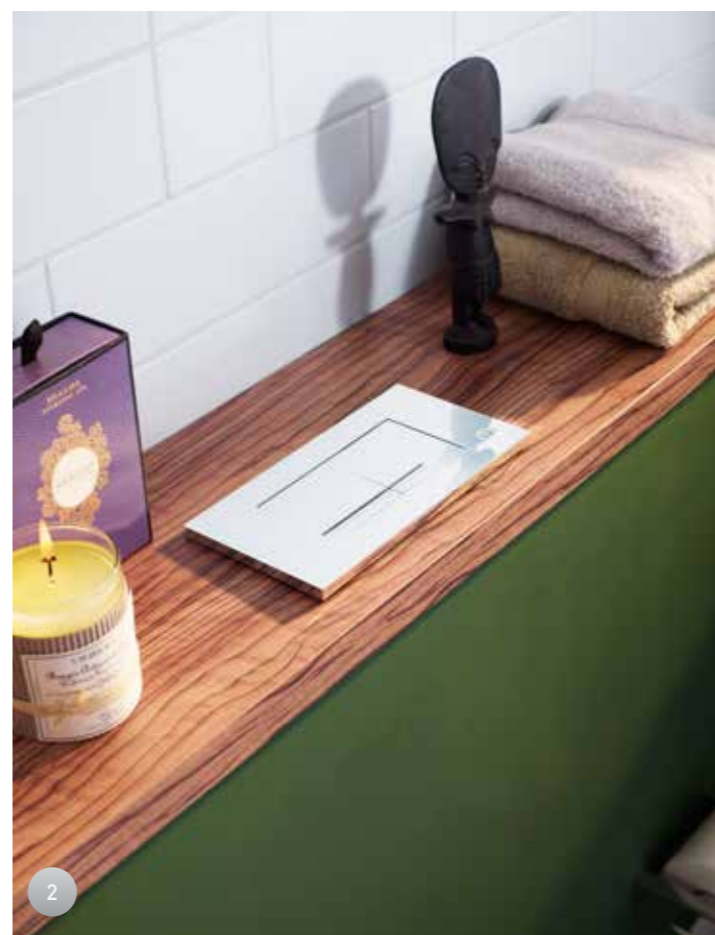
Protective plugs fitted to protect the connections during installation.



Nautic toilet bowl. The Triomont fixture can be used for all toilet bowls from Gustavsberg and Villeroy & Boch. This allows you to choose from a wide variety of designs, and covers many special needs as well. The various toilet bowl models are presented later in this brochure.



Thanks to the lower wall fitting, there is no need to drill holes in the floor to install the fixture.

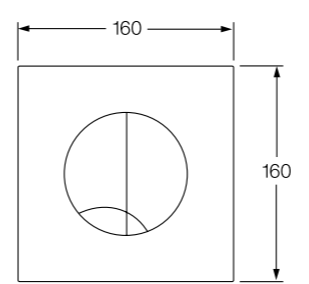


FLUSH NEATLY. FLUSH SMARTLY.

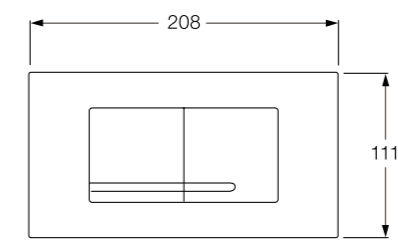
Front panels/push buttons in a variety of models and materials make it easier for you to find a style that matches your taste and bathroom layout. You can choose between wall-mounted and top-mounted control panels, and there is even a pneumatic model. The control panel you choose determines whether you can use single or dual-flush functionality. NB The header line for the different control panels states whether they match fixture XS or XT. Please make sure to choose a control panel that matches the fixture you have ordered.

- 1 Wall-mounted control panel**
 Mechanical or pneumatic control panel for placing in a fixed position on the wall above the bowl.
- 2 Top-mounted control panel**
 Mechanical or pneumatic control panel for placing in a fixed position on top of a half-wall.
- 3 Pneumatic flush button**
 Air-controlled single-flush button that you can position anywhere within 1.5 m of the fixture.

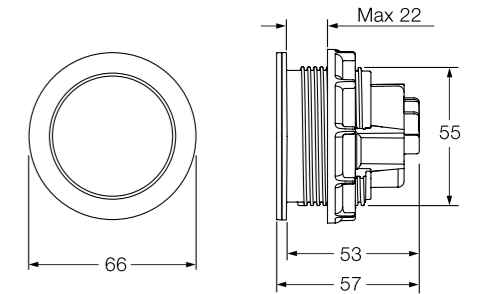
The sketches below present the dimensions of the various control panels/push-buttons models available for Triomont XT and XS.



Wall-mounted control panel



Top-mounted control panel



Pneumatic flush button

TRIOMONT CONTROL PANELS

- Numerous models and materials to choose from.
- The push button chosen determines the flushing volume.
- Single or double flushing.

MECHANICAL WALL-MOUNTED CONTROL PANEL for Triomont XS, 3/6 litre double flushing



Duo, white, plastic ART no. GB1921102035
 Duo, matt chrome, plastic ART no. GB1921102036
 Duo, polished chrome, plastic ART no. GB1921102037
 Duo, white, plastic ART no. GB1921102052
 Duo, polished chrome, plastic ART no. GB1921102053
 Duo, white metal, no logo ART no. GB1921102045

MECHANICAL WALL-MOUNTED CONTROL PANEL for Triomont XS, 6 litre single flush



Duo, polished chrome, metal, no logo ART no. GB1921102047
 Duo, stainless metal, no logo ART no. GB1921102054
 Single, white, plastic ART no. GB1921102030
 Single, matt chrome, plastic ART no. GB1921102031
 Single, polished chrome, plastic ART no. GB1921102032
 Single, white, plastic ART no. GB1921102050



Single, polished chrome, plastic ART no. GB1921102051
 Single, white, metal, no logo ART no. GB1921102040
 Single, polished chrome, metal, no logo ART no. GB1921102042

MECHANICAL TOP-MOUNTED CONTROL PANEL for Triomont XT, 3/6 litre double flushing



Duo, white, plastic ART no. GB1921102080
 Duo, polished chrome, plastic ART no. GB1921102081

PNEUMATIC FLUSH BUTTON for Triomont XS and XT 6 litre single flush



Single, Stainless ART no. GB1921102092

PNEUMATIC WALL-MOUNTED CONTROL PANEL for Triomont XS, 3/6 litre double flushing



Duo, white, plastic ART no. GB1921102060
 Duo, polished chrome, plastic ART no. GB1921102061
 Duo, white, glass ART no. GB1921102066
 Duo, black, glass ART no. GB1921102067

PNEUMATIC TOP-MOUNTED CONTROL PANEL for Triomont XT, 3/6 litre double flushing



Duo, white, plastic ART no. GB1921102085
 Duo, polished chrome, plastic ART no. GB1921102086

TRIOMONT INSTALLATION SYSTEM

- SINTEF-certified, load-tested steel frame, 400 kg.
- Floor or wall-connected drain.
- Wall mountings included.
- Adjustable seat height, 410–610 mm.
- Adjustable flushing volume.
- Recommended WC fitting, 450 mm above the floor.

		ART no
<p>For fitting with a wall-mounted push button or a pneumatic flushing button.</p>	<p>Triomont XS WC fixture High model for fitting against a straight wall or in a corner. Finish off with a wall-mounted push button or a pneumatic flushing button.</p> <p>Weight: 14 kg including packaging. Installation: the height on the sketch (1000 mm) results in a toilet seat height of around 410 mm. Adjustable up to 610 mm.</p> <p>Triomont XS for mechanical wall-mounted push button Triomont XS for pneumatic flushing button or pneumatic wall-mounted push button.</p> <p>Accessories: Corner fitting for corner installation Extra wall fitting (when the lower fitting supplied cannot be used).</p>	<p>GB1921102020</p> <p>GB1921102021</p> <p>GB1921102029 GB1921102027</p>
<p>For fitting with a top-mounted push button or a pneumatic flushing button.</p>	<p>Triomont XT WC fixture Low model for fitting against a straight wall. Finish off with a top-mounted push button or a pneumatic flushing button.</p> <p>Weight: 12 kg including packaging. Installation: the height on the sketch (830 mm) results in a toilet seat height of around 410 mm. Adjustable up to 610 mm.</p> <p>Triomont XT for mechanical top-mounted push button* Triomont XT for pneumatic flushing button or pneumatic top-mounted push button*</p> <p>Accessories: Extra wall fitting (when the lower fitting supplied cannot be used).</p> <p>*) Note! For top-mounting only.</p>	<p>GB1921102024</p> <p>GB1921102025</p> <p>GB1921102027</p>
<p>For fitting with a wall-mounted push button</p>	<p>Triomont XS Vario WC fixture Primarily intended for hospitals and care homes. High model for fitting against a straight wall or in a corner. With adjustable toilet bowl height after installation. Finish off with a wall-mounted push button.</p> <p>Weight: 19 kg including packaging Installation: After installation, the toilet bowl can be raised 100 mm. It can naturally also be returned to its original position.</p> <p>Triomont XS Vario for mechanical wall-mounted push button</p> <p>Accessories: Corner fitting for corner installation Extra wall fitting (when the lower fitting supplied cannot be used).</p>	<p>GB1921102022</p> <p>GB1921102029 GB1921102027</p>

Triomont WC fixture deliveries include

- WC fixture with wall-mounting set.
- Complete cistern insulated against condensation, with flushing connection and cut-off valve.
- Connection fittings for drain and water supply (pipe in pipe).
- 4 wall fittings.
- M12 threaded bars for fitting the toilet bowl.

- Blue plastic drilling template for control panel.
- Protection plugs.
- Screws and plugs for fixing.
- Insulation protection for fitting between the toilet bowl and the wall.
- Drilling template for wall material.
- Installation instructions.

Always finish off with:

- Toilet bowl.
- Push button/control panel.

TRIOMONT INSTALLATION SYSTEM, WASHBASIN FIXTURE

- Neat installation with a minimum of visible pipes
- Suits all washbasins with a bolt-to-bolt distance of up to 280 mm
- Steel frame load tested to 175 kg

		ART no	
	<p>Triomont XS washbasin fixture. High model for fitting against a straight wall or in a corner.</p> <p>Weight: 11 kg including packaging</p> <p>Triomont XS washbasin fixture</p> <p>Accessories: Corner fitting for corner installation</p> <p>Extra wall fitting (when the lower fitting supplied cannot be used).</p>	GB1921102100	
		GB1921102029	
		GB1921102027	

<p>Triomont washbasin fixture deliveries include:</p> <ul style="list-style-type: none"> • Fixture. • M12 threaded bars for fitting the washbasin. • Four wall fittings. • Screws and plugs for fixing. • Angled drain connection with dia. 32 mm rubber nipple. • Installation instructions. 	<p>Always finish off with:</p> <ul style="list-style-type: none"> • Washbasin. • Washbasin mixer. • Wall-fitted water trap. <p>To view our complete range of washbasins, mixers and water traps, visit www.gustavsberg.com. On this website, you can see all the products and order brochures of our entire product range.</p>
--	---

TOILET BOWLS/WALL-MOUNTED WCS, GUSTAVSBERG

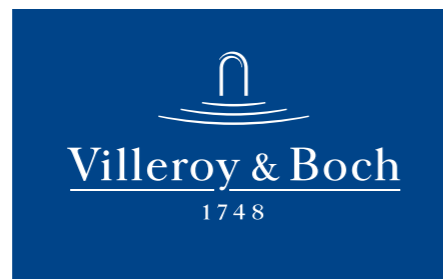
- All toilet bowls can be combined with Triomont fixtures.
- All Gustavsberg toilet bowls are for fitting with centre to centre measurements of 180 or 230 mm.
- Load tested to 400 kg.
- Multiple seat options.
- C+ as an option for simple and eco-friendly cleaning.

		ART no	With C+ ART no
	<p>5530 Nautic WC bowl for wall-mounting The cistern is not included in the delivery. If the walls are not so sturdy, the bowl must be mounted on a fixture, see page 78.</p> <p>Without seat. With C+ With white standard seat</p>	GB115530001010	GB1155300R1000
	<p>5522 Nautic WC for wall-mounting. If the walls are not so sturdy, the WC must be mounted on a fixture. We recommend our GB1921100500 fixture, which you will find information about on www.gustavsberg.com</p> <p>Double flushing 2/4 litre With white standard seat With hard white seat with SC/QR With hard white seat with SC/QR. With C+</p> <p>Single flush, 4 litre With white standard seat With hard white seat with SC/QR. With C+</p>	GB11552201211 GB11552201231	GB1155222R1231
	<p>4330 Artic WC bowl for wall-mounting The cistern is not included in the delivery. If the walls are not so sturdy, the bowl must be mounted on a fixture, see page 78.</p> <p>Hard white seat with SC/QR</p>	GB114330201231	GB1143302R1231
	<p>5693 Logic WC bowl for wall-mounting The cistern is not included in the delivery. If the walls are not so sturdy, the bowl must be mounted on a fixture, see page 78.</p> <p>Hard seat with stainless steel mountings</p>	56939901	569399R1

YOU CAN ALSO CHOOSE TOILET BOWLS FROM VILLEROY & BOCH

Since 2000, Gustavsberg has been owned by Villeroy & Boch – one of the leading manufacturers of bathroom products in Europe. On the following pages, we present a selection of the Villeroy & Boch toilet bowls that can be used with the Triomont fixtures. The different models are intended for different areas of use. It may well be that you find one that matches your needs exactly. All Villeroy & Boch bowls are designed for mounting with a centre to centre distance between bolts of 180 mm.

To view even more toilet bowls or the entire range of Villeroy & Boch bathroom products, contact us or visit www.villeroy-boch.com.



Villeroy & Boch owns Gustavsberg, which gives you the opportunity to combine these two “bathroom worlds”. Simply put, you can choose the Triomont solution from Gustavsberg and then select a WC bowl from Villeroy & Boch. We are sure that you will find just what you are looking for.



VILLEROY & BOCH WC BOWLS

- All WC bowls can be combined with Triomont fixtures.
- All Villeroy & Boch WC bowls are for fitting with a centre to centre measurement of 180 mm.
- Broad range that covers many special needs.
- Load tested to 400 kg.
- Multiple seat options.
- C+ as an option for simple and eco-friendly cleaning.

		ART no	
		<p>Omnia Classic compact</p> <p>Standard bowl with traditional design and compact dimensions (490 mm).</p> <p>WC bowl, white</p> <p>Seat with stainless steel mountings</p>	<p>7667 10 01</p> <p>8823 61 01</p>
		<p>Subway</p> <p>This model features a neat design with a smooth exterior and a seat that is simple to remove and replace. The WC is easy to keep clean for improved hygiene.</p> <p>WC bowl, white</p> <p>WC bowl, white with C+</p> <p>Seat with Soft Close/Quick Release functions</p> <p>Seat with Quick Release function</p>	<p>6600 10 01</p> <p>6600 10 R1</p> <p>9955 S1 01</p> <p>9955 Q1 01</p>
		<p>Subway Compact</p> <p>Just like the model above, but with compact dimensions – only 480 mm. Ideal for small bathrooms.</p> <p>WC bowl, white</p> <p>WC bowl, white with C+</p> <p>Seat with Soft Close/Quick Release functions</p> <p>Seat with Quick Release function</p>	<p>6604 10 01</p> <p>6604 10 R1</p> <p>9966 S1 01</p> <p>9966 Q1 01</p>
		<p>Subway 2.0</p> <p>With "Supra fix" – an installation method in which the entire bowl is fitted via the hole for the seat. Quick and simple installation, no visible screws. The model features a neat design with a smooth exterior and a seat that is simple to remove and replace. The WC is easy to keep clean for improved hygiene.</p> <p>WC bowl, white</p> <p>WC bowl, white with C+</p> <p>Seat with Soft Close/Quick Release functions</p> <p>Seat with Quick Release function</p>	<p>5600 10 01</p> <p>5600 10 R1</p> <p>9M18 S1 01</p> <p>9M18 Q1 01</p>
		<p>Subway 2.0 Compact</p> <p>Just like the model above, but with compact dimensions – only 480 mm. Ideal for small bathrooms.</p> <p>WC bowl, white</p> <p>WC bowl, white with C+</p> <p>Seat with Soft Close/Quick Release functions</p> <p>Seat with Quick Release function</p>	<p>5606 10 01</p> <p>5606 10 R1</p> <p>9M69 S1 01</p> <p>9M69 Q1 01</p>

		ART no	
		<p>Omnia Vita</p> <p>Elevated model. With standard bolt height, this model provides an elevated sitting height. Also suitable for use in cases where the fitting for the toilet bowl is too low.</p> <p>WC bowl, white</p> <p>WC bowl, white with C+</p> <p>Seat with stainless steel mountings</p> <p>Seat with side-adjustment blocks</p>	<p>6695 10 01</p> <p>6695 10 R1</p> <p>8823 61 01</p> <p>8821 61 01</p>
		<p>Omnia Architectura</p> <p>An extra-long model primarily intended for hospitals and care homes, to make it easier for staff to assist users. However, it is also ideal for standard residences where building regulations occasionally require bathrooms to be adapted for people with special needs.</p> <p>WC bowl, white</p> <p>WC bowl, white with C+</p> <p>Seat with stainless steel mountings</p>	<p>5678 10 01</p> <p>5678 10 R1</p> <p>98M9 61 01</p>
		<p>Omnia Pro children's WC</p> <p>A small model with a low sitting height (35 cm). Primarily intended for public settings, but also ideal for homes that have room for a separate toilet for children.</p> <p>WC bowl, white</p> <p>WC bowl, white with C+</p> <p>Seat with stainless steel mountings</p>	<p>7602 10 01</p> <p>7602 10 R1</p> <p>8820 61 01</p>
		<p>Lifetime</p> <p>With a bowl that is 3 cm broader and 4 cm longer than normal, and with an ergonomic seat for extra sitting comfort.</p> <p>WC bowl, white</p> <p>WC bowl, white with C+</p> <p>Seat with Soft Close/Quick Release functions</p>	<p>5672 10 01</p> <p>5672 10 R1</p> <p>9M 02 S1 01</p>

GUSTAVSBERG HAS EVERYTHING FOR THE COMPLETE BATHROOM.

We have a range of special brochures packed with additional information about bathroom porcelain, mixers, bathtubs, bathroom furniture, accessories and massage bathtubs. To order, visit our website, use the info address or give us a call. You will find our contact details at the bottom of this page.



A MEMBER OF THE
VILLEROY & BOCH GROUP

Villeroy & Boch Gustavsberg AB
Box 400, 134 29 Gustavsberg, Sweden
Telefon +46 8 570 391 00
www.gustavsberg.com info@gustavsberg.com