

Bathroom 2560

Replacement/update for bolt/bracket mounting 56 cm

Without faucet hole.



Product features

- Replacement sink for old brackets
- Extra flexibility in bracket spacing, 455-515 mm
- For bolt or bracket mounting

Article number etc.

RSK-nr:

ART-nr:

EAN-nr:

GB1125600111

7391530057132

Packaging

L: 595,00 x W: 370,00 x H: 470,00 mm.

Weight: 16,00 kg

Energy labeling and certifications

- The product follows AMA recommendations, as well as SS-EN 31.

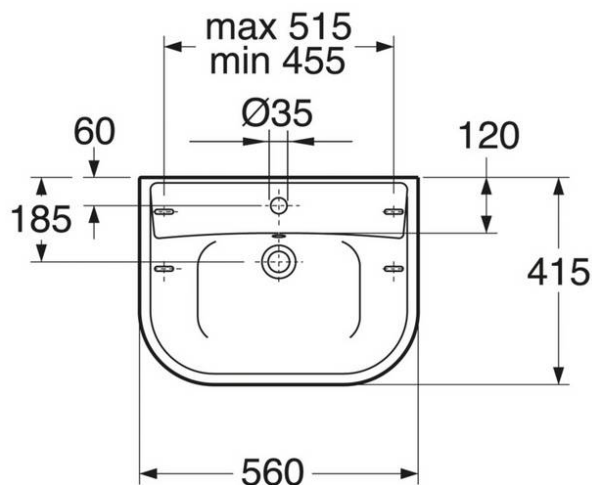
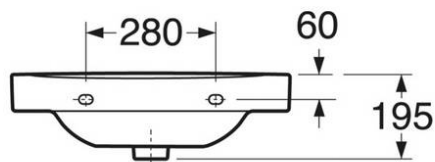


Villeroy & Boch Gustavsberg AB
har produkter anpassade
till Branschregler Saker
Vatteninstallation.



Assembling & Care

Mounted with flexible bracket dimensions on 260 mm long brackets. The sink can also be mounted on bolts directly against the wall. Bolt projection from finished wall must be 50 Å ± 2 mm. Brackets and other fasteners not included.



Villeroy & Boch Gustavsberg AB / Box 400, 134 29 Gustavsberg, Sweden / Tel: +46 (0) 8-570 391 00 | Fax +46 8 570 320 36 /

www.gustavsberg.com / info@gustavsberg.com